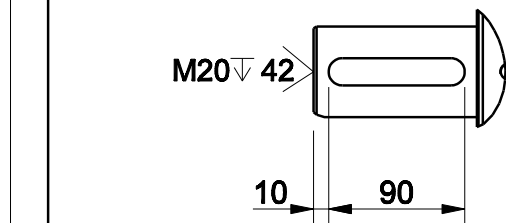
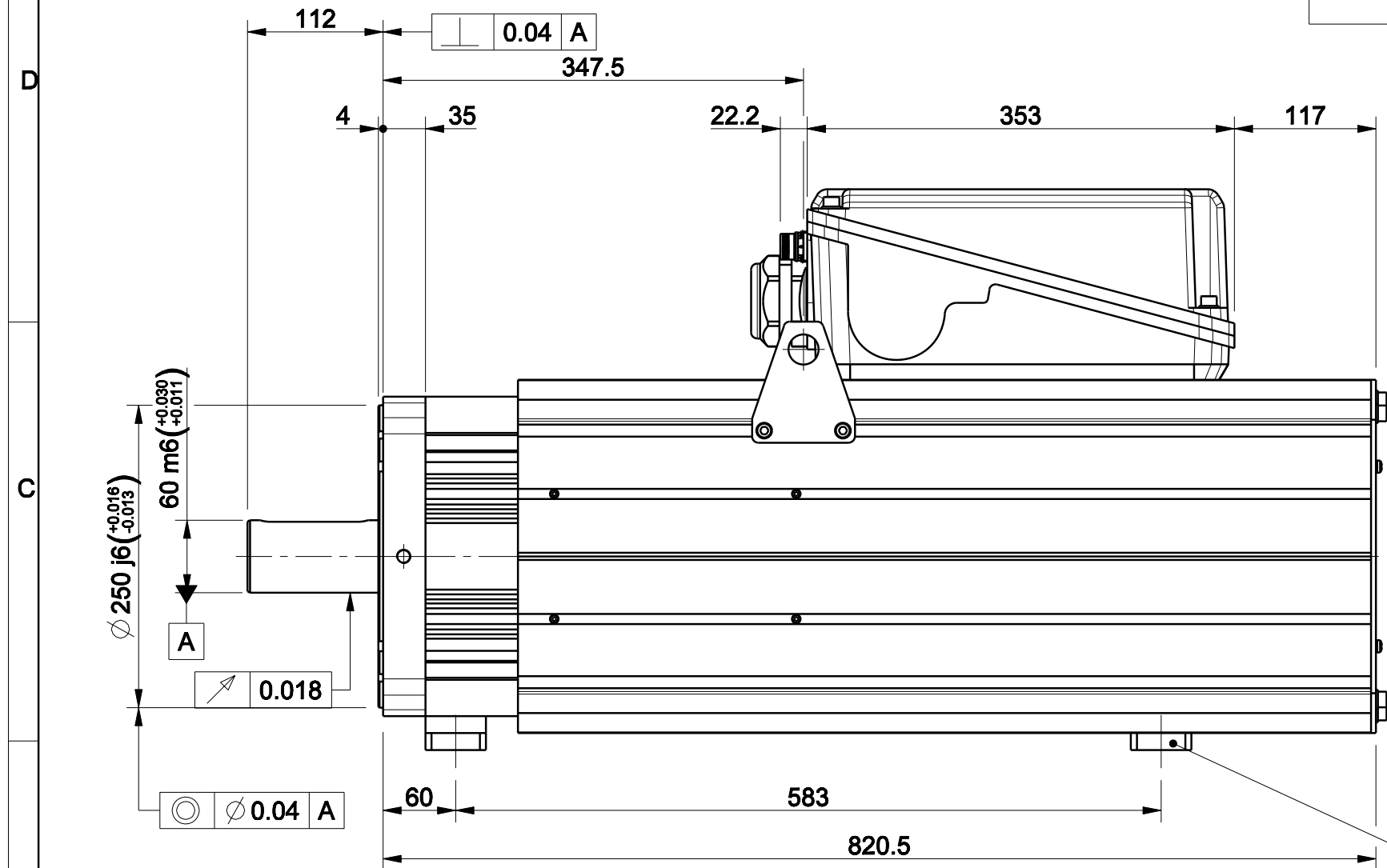
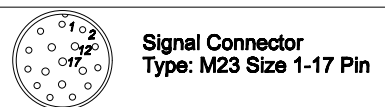


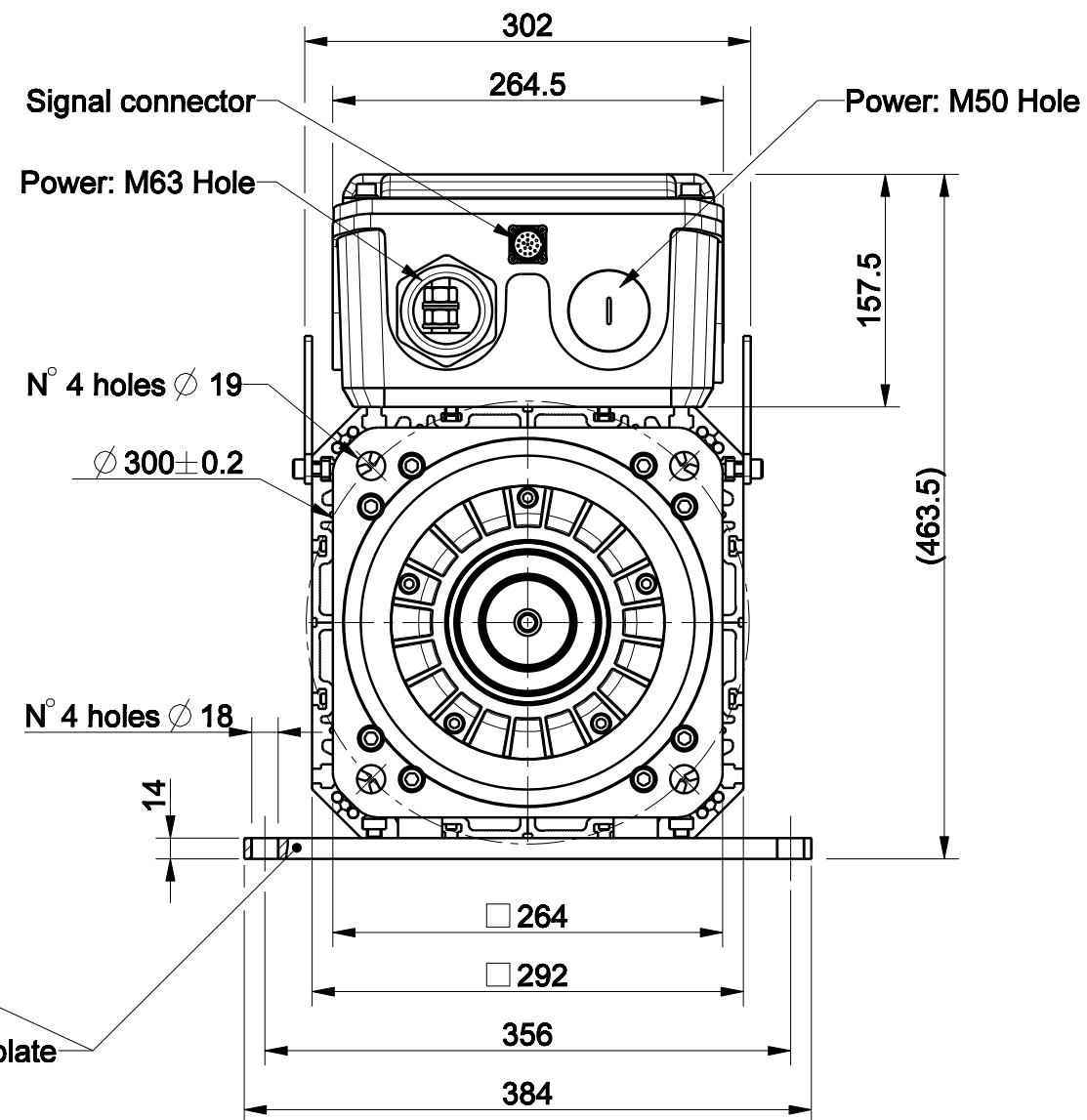
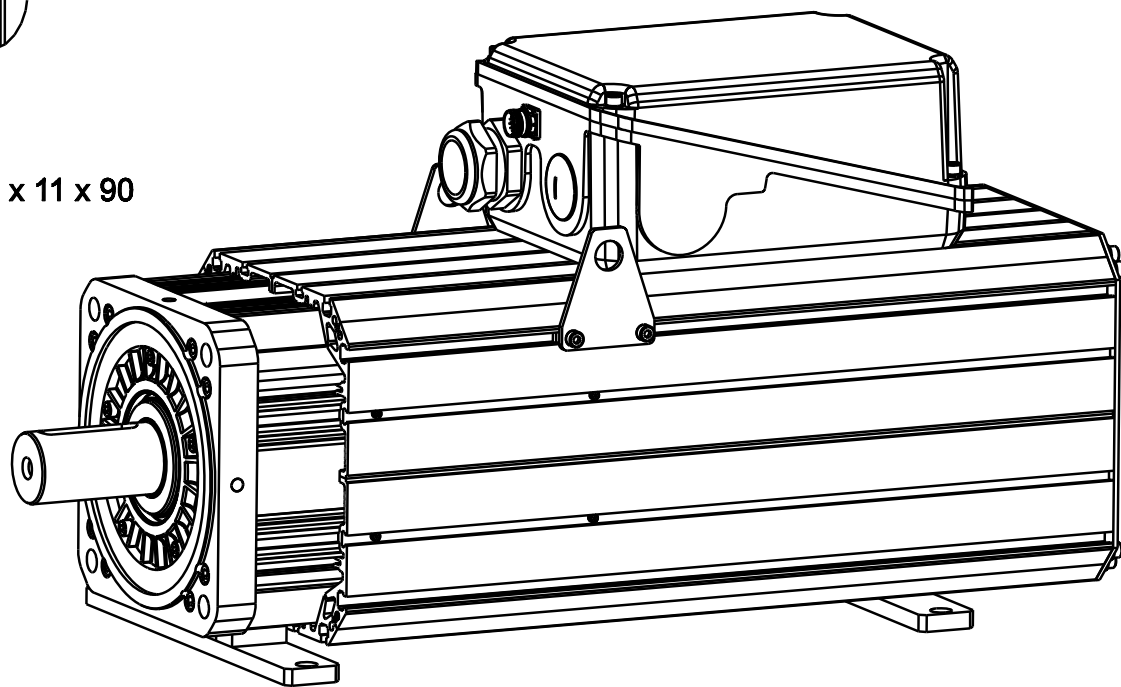
1		2		3		4	
版本 Rev No.		描述 Description		日期 Date		姓名 Name	



Option "K": full key 18 x 11 x 90

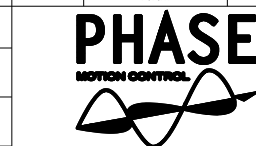


Pin	EnDat Code: C, M, N, U, Q	Resolver Code: R	SinCos Code: S
1	A+	n.c.	A+
2	A-	n.c.	A-
3	DATA+	n.c.	I-(index)
4	PTC+	SIN-, 1 c/r	Sin-(C-), 1 c/r
5	CLOCK+	COS+, 1 c/r	Cos+(D-), 1 c/r
6	n.c.	COS-, 1 c/r	Cos-(D+), 1 c/r
7	0 V	RESEX+	0 V
8	KTY84+ ^{***}	n.c.	PTC+
9	KTY84- ^{***}	KTY84- ^{***}	PTC-/KTY- ^{***}
10	+Vcc	RESEX-	+Vcc(5Vdc)
11	B+	n.c.	B+
12	B-	n.c.	B-
13	DATA-	n.c.	I-(index)
14	CLOCK-	SIN+, 1 c/r	Sin+(C-), 1 c/r
15	0 V sense	n.c.	0 V sense
16	Vcc sense	PTC+	+Vcc sense
17	PTC-	PTC-	KTY+ ^{***}



Approved	
Signature	Date

材质 Material	处理 Treatment	项目 Project-Prod.item/Instrument
几何公差 GB/T1184 (ISO 2768-2) Geometrical tolerance	K	U31340F303
未注公差 GB/T1804 (ISO 2768-1) Linear tolerance	m	描述 Description
角度公差 GB/T1804 (ISO 2768-1) Angular tolerance	m	1x45°
0.5 +3	>3+ 6	未注圆角 Undimensioned chamfers
±0.1	±0.1	未注圆角 Undimensioned radii
±0.2	±0.2	R0,5
±0.3	±0.3	电机总装
±0.5	±0.5	图号 Drawing No.
±0.8	±0.8	67924N-0-A-3
±1.2	±1.2	版本 Rev
±2	±2	A
设计 Designed	名字 Name	比例 Scale
校对 Checked		1:5
审核 Approved		页码 Sheet
		1/1
重量 Kg Mass	223.256	数量 Qty



宁波菲仕运动控制技术有限公司
NINGBO PHASE MOTION CONTROL CO.,LTD.