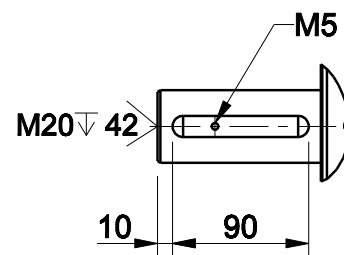
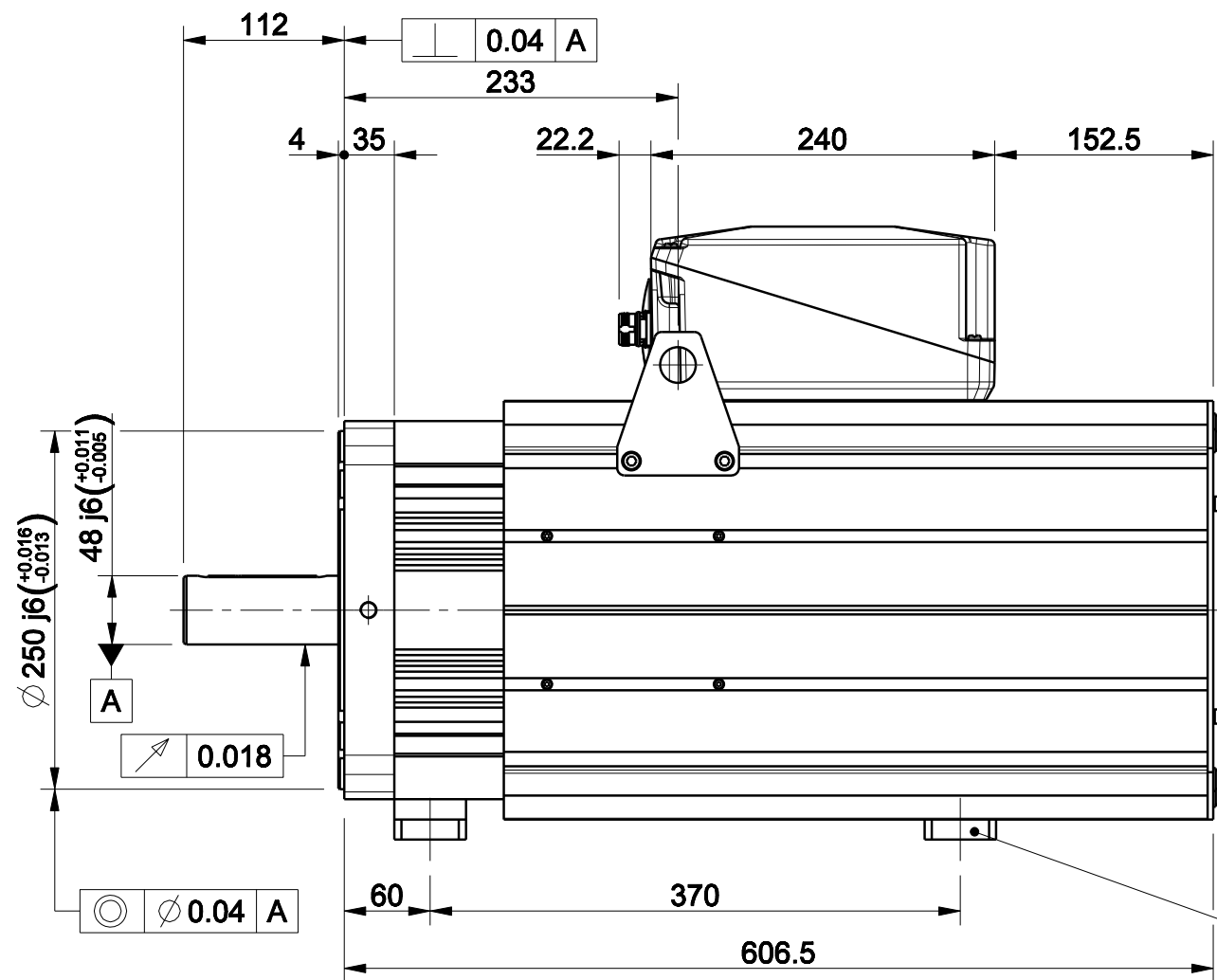
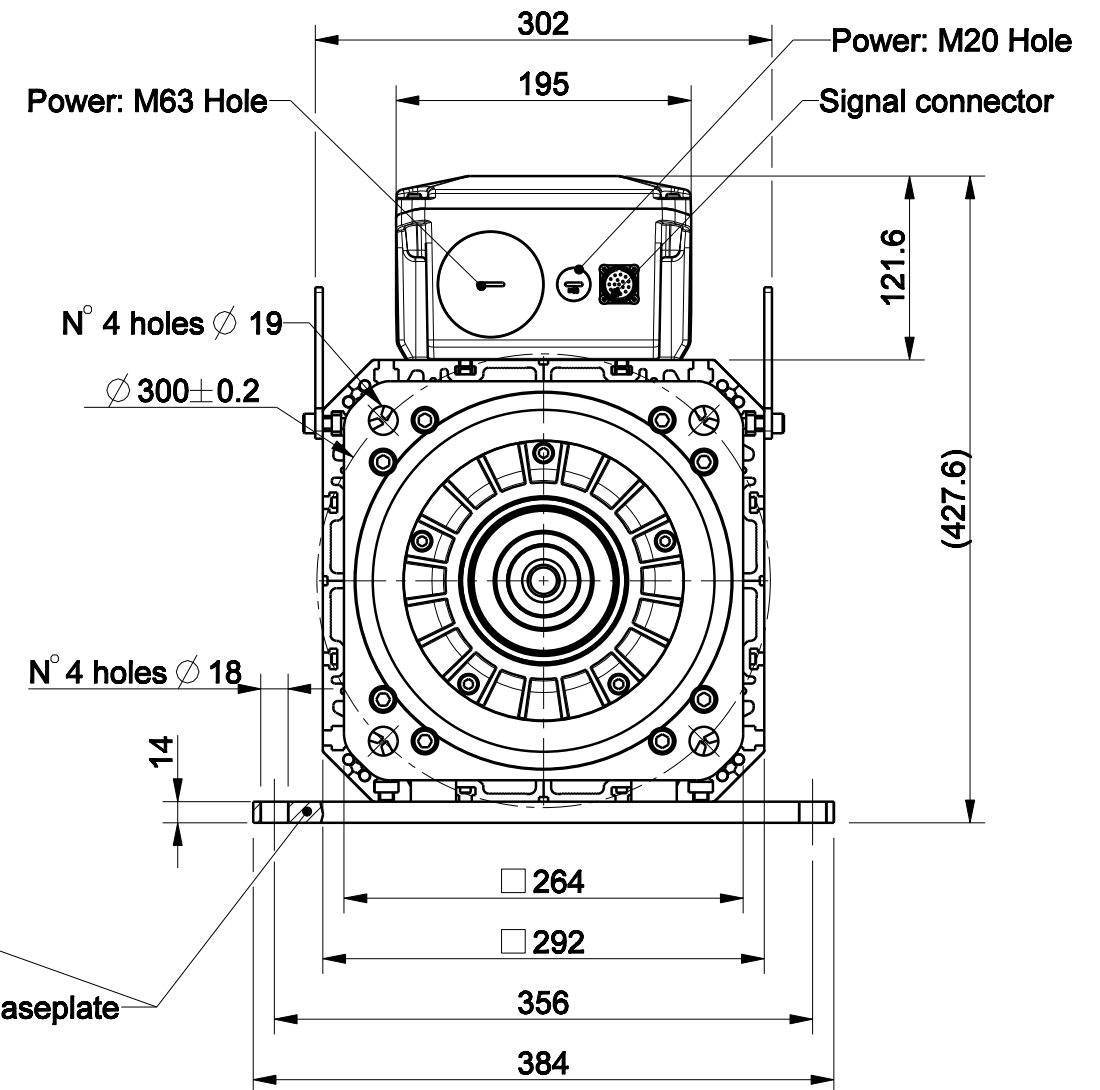
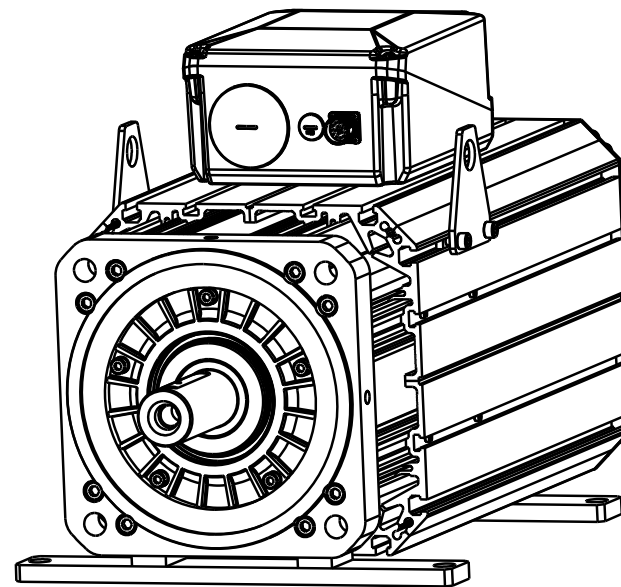


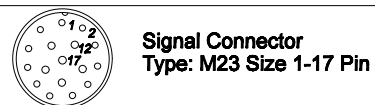
1		2		3		4	
版本 Rev No.		描述 Description		日期 Date		姓名 Name	



Option "K": full key 14 x 9 x 90



Option "U": baseplate



Pin	EnDat Code: C, M, N, U, Q	Resolver Code: R	SinCos Code: S
1	A+	n.c.	A+
2	A-	n.c.	A-
3	DATA+	n.c.	I+(Index)
4	PTC+	SIN-, 1 c/r	Sin-(C-), 1 c/r
5	CLOCK+	COS+, 1 c/r	Cos+(D-), 1 c/r
6	n.c.	COS-, 1 c/r	Cos-(D+), 1 c/r
7	0 V	RESEX+	0 V
8	KTY84+ ^{oo}	KTY84+ ^{oo}	PTC+
9	KTY84- ^{oo}	KTY84- ^{oo}	PTC-/KTY- ^{oo}
10	+Vcc	RESEX-	+Vcc(5Vdc)
11	B+	n.c.	B+
12	B-	n.c.	B-
13	DATA-	n.c.	I-(Index)
14	CLOCK-	SIN+, 1 c/r	Sin+(C+), 1 c/r
15	0V sense	n.c.	0V sense
16	Vcc sense	PTC+	+Vcc sense
17	PTC-	PTC-	KTY+ ^{oo}

Approved	
Signature	Date

材质 Material		项目 Project-Prod.item/Instrument	
处理 Treatment		U31320F303	
几何公差 GB/T1184 (ISO 2768-2) Geometrical tolerance		描述 Description	
未注公差 GB/T1804 (ISO 2768-1) Linear tolerance		MOTOR ASSEMBLY LONG	
角度公差 GB/T1804 (ISO 2768-1) Angular tolerance		电机总装	
0.5 +3	>3+ 6	>6+ 30	>30+ 120
±0.1	±0.1	±0.2	±0.3
年,月,日 Date		名字 Name	
设计 Designed		图号 Drawing No.	
校对 Checked		51375N-0-A-3	
审核 Approved		版本 Rev	
		A	
		比例 Scale	
		1:5	
		页码 Sheet	
		1/1	
重量 Kg		数量 Qty	
140.469			