

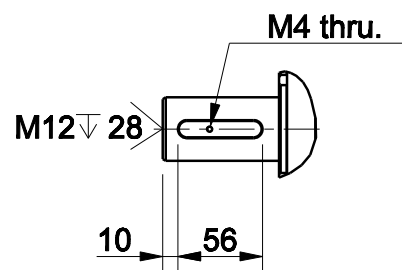
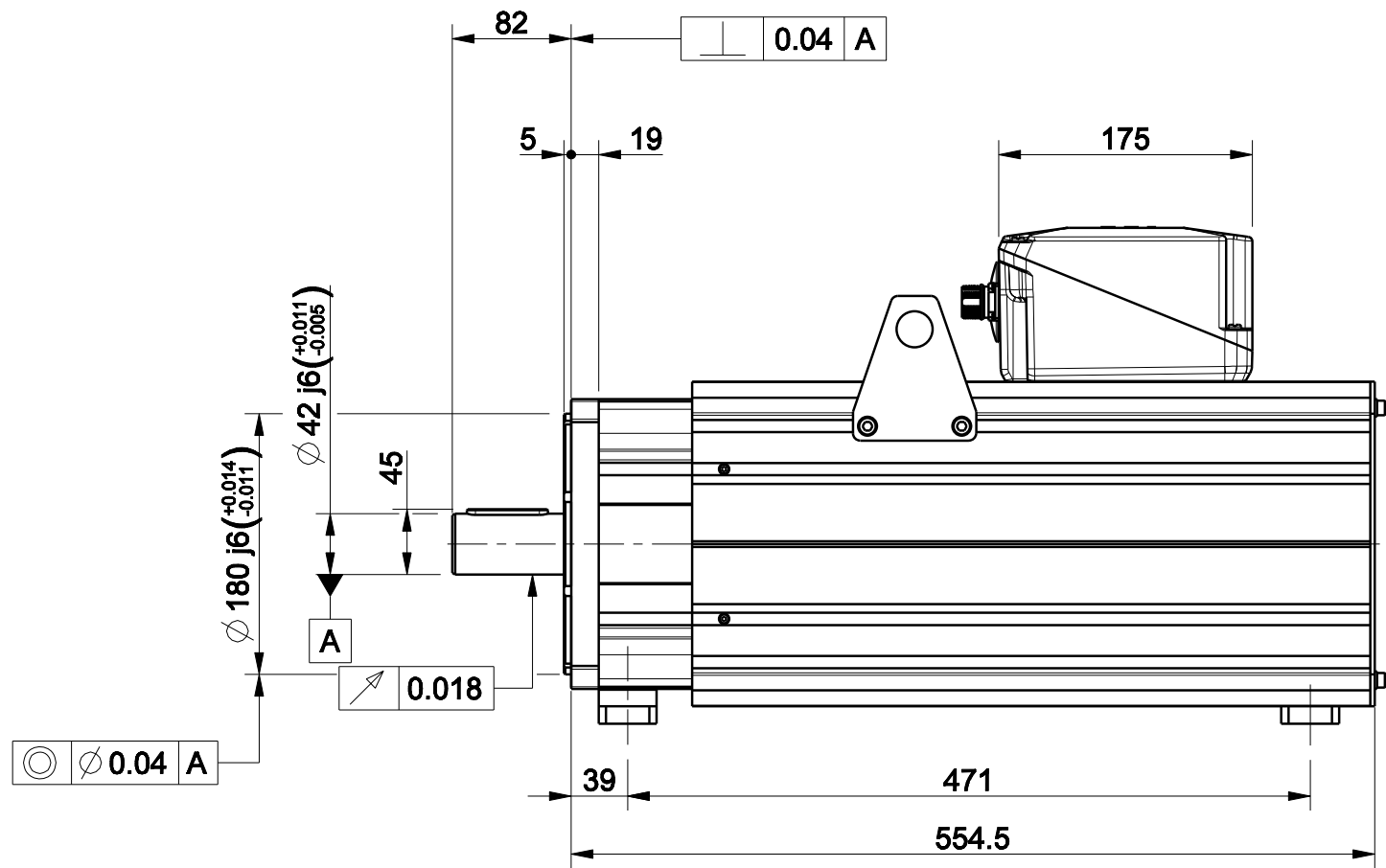
1		2		3		4	
				版本 Rev No.	描述 Description	日期 Date	姓名 Name

D

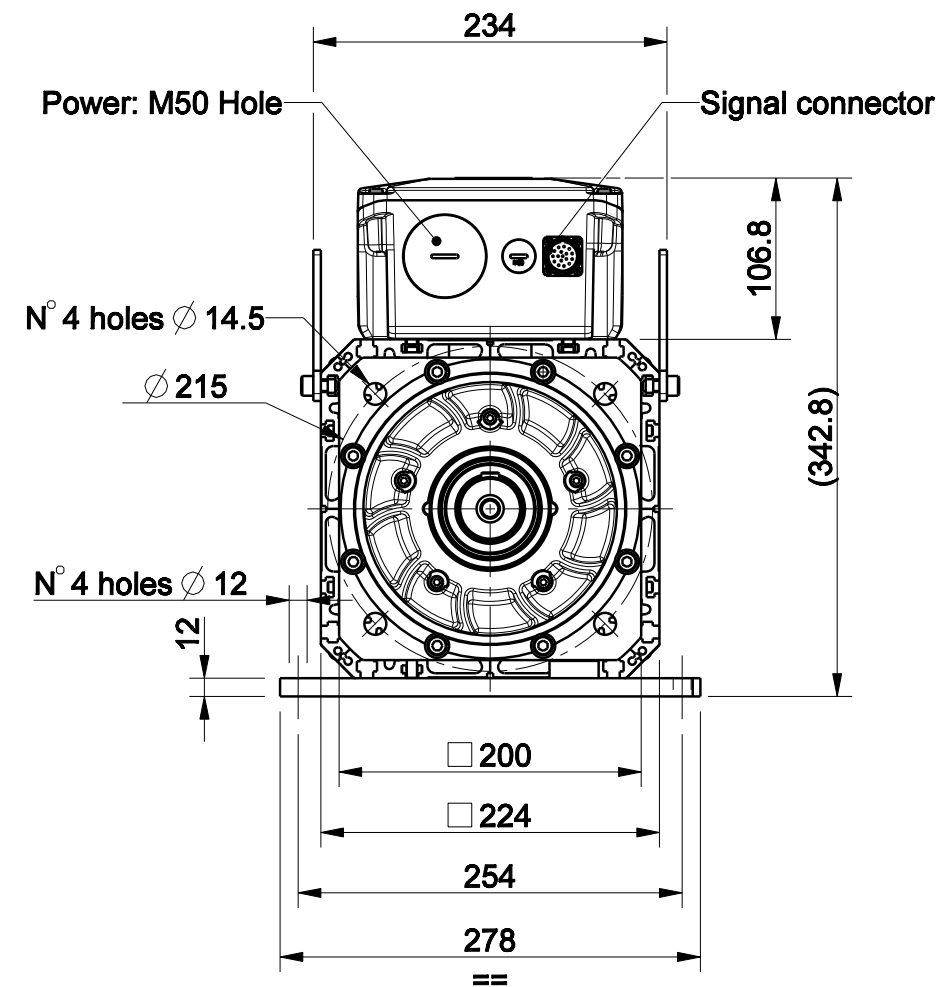
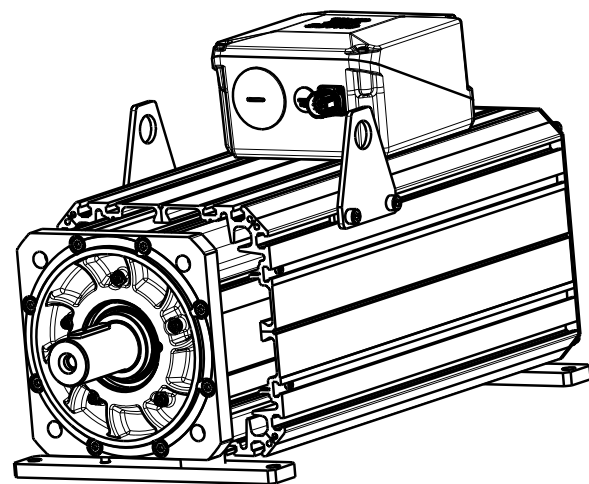
C

B

A



Option "K" : full key 12 x 8 x 56

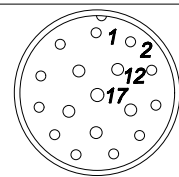


D

C

B

A

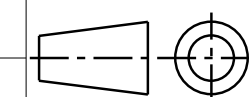


Signal Connector
Type: M23 Size 1-17 Pin

Pin	EnDat Code:C,M,N,U,Q	Resolver Code:R	SinCos Code:S
1	A+	n.c.	A+
2	A-	n.c.	A-
3	DATA+	n.c.	I+(index)
4	PTC+	SIN-,1 c/r	Sin-(C-),1 c/r
5	CLOCK+	COS+,1 c/r	Cos+(D-),1 c/r
6	n.c.	COS-,1 c/r	Cos-(D+),1 c/r
7	0 V	RESEX+	0 V
8	KTY84+**	KTY84+**	PTC+
9	KTY84-**	KTY84-**	PTC-/KTY-**
10	+Vcc	RESEX-	+Vcc(5Vdc)
11	B+	n.c.	B+
12	B-	n.c.	B-
13	DATA-	n.c.	I-(index)
14	CLOCK-	SIN+,1 c/r	Sin+(C-),1 c/r
15	0V sense	n.c.	0V sense
16	Vcc sense	PTC+	+Vcc sense
17	PTC-	PTC-	KTY+**

Approved	
Signature	Date

材质 Material		项目 Project-Prod.item/Instrument	
处理 Treatment		U31013F203	
几何公差 GB/T1184 (ISO 2768-2) Geometrical tolerance		描述 Description	
未注公差 GB/T1804 (ISO 2768-2) Linear tolerance		MOTOR ASSEMBLY	
角度公差 GB/T1804 (ISO 2768-1) Angular tolerance		电机总装	
0.5 +3		图号 Drawing No.	
>3+ 6		50235N-1-A-3	
>6+ 30		版本 Rev	
>30+ 120		A	
>120 +400		比例 Scale	
>400+ 1000		1:5	
>1000 +2000		重量 Kg	
>2000 +4000		86.081	
±0.1		数量 Qty	
±0.1		1/1	
±0.2		页码 Sheet	
±0.3			
±0.5			
±0.8			
±1.2			
±2			
年,月,日 Date		名字 Name	
设计 Designed			
绘图 Drawn			
校对 Checked			



未注倒角
Undimensioned
chamfers
1x45°
未注圆角
Undimensioned
radii
R0,5



NINGBO Ltd.
宁波菲仕电机技术有限公司