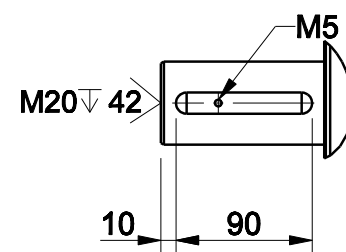
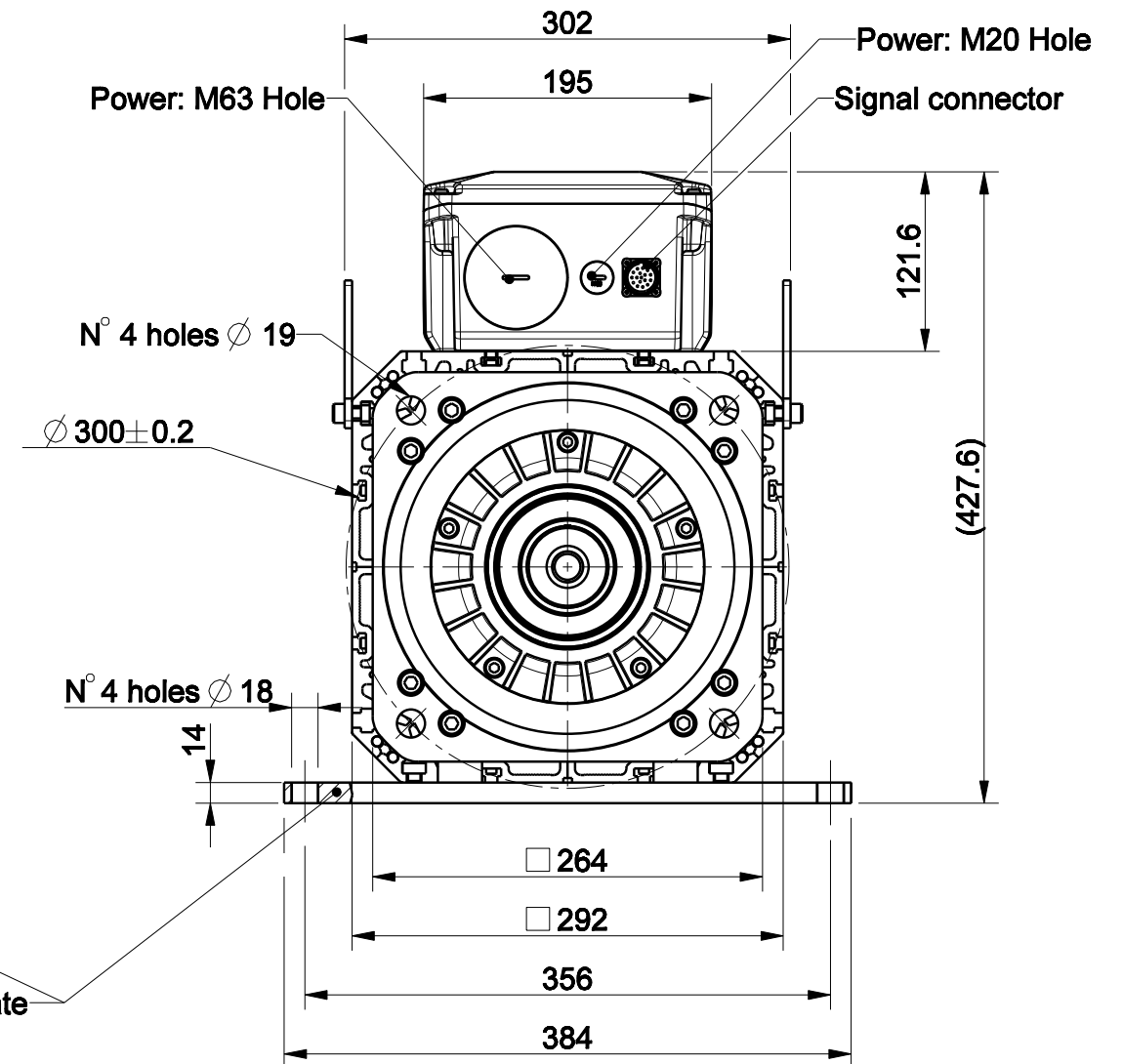
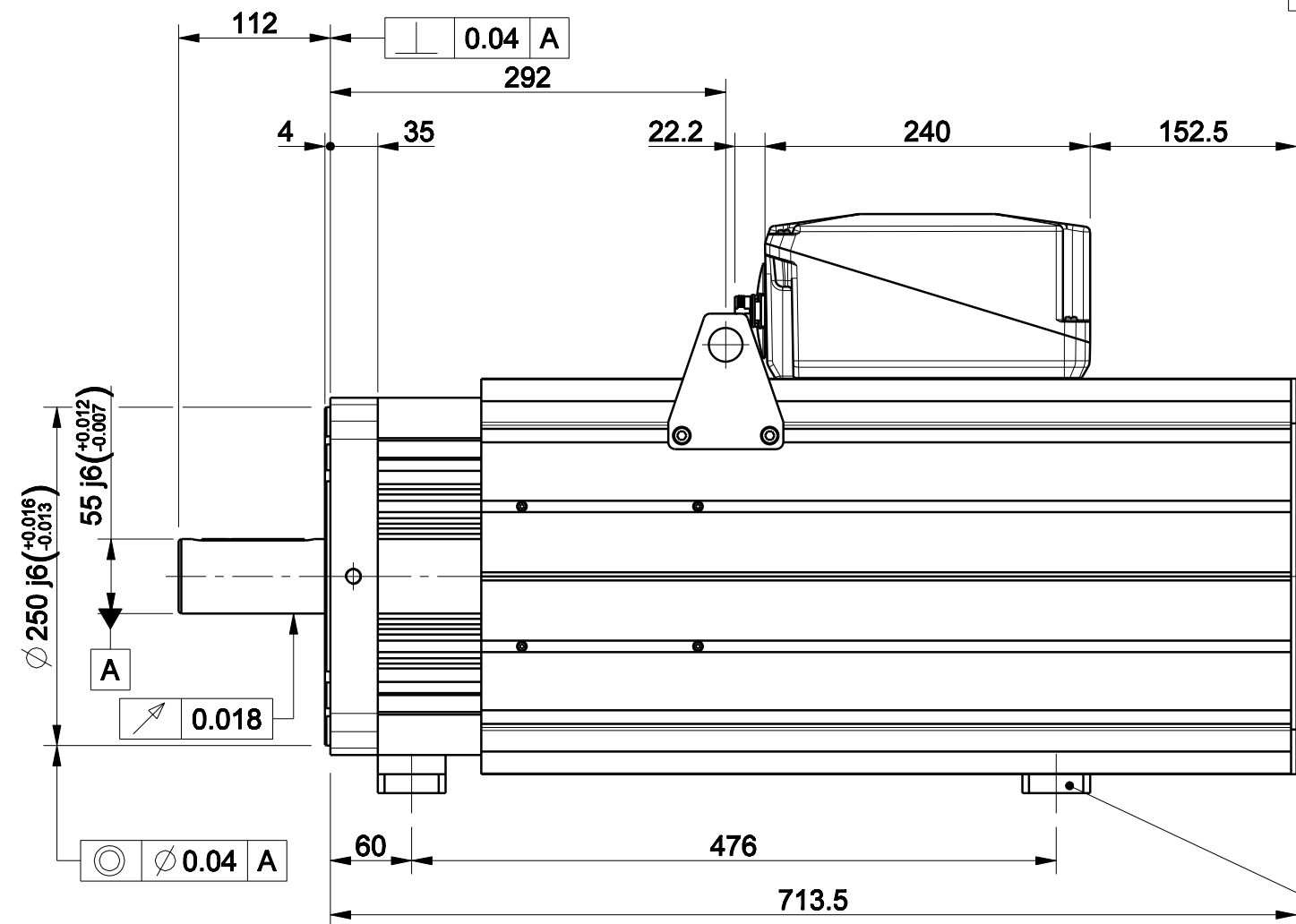
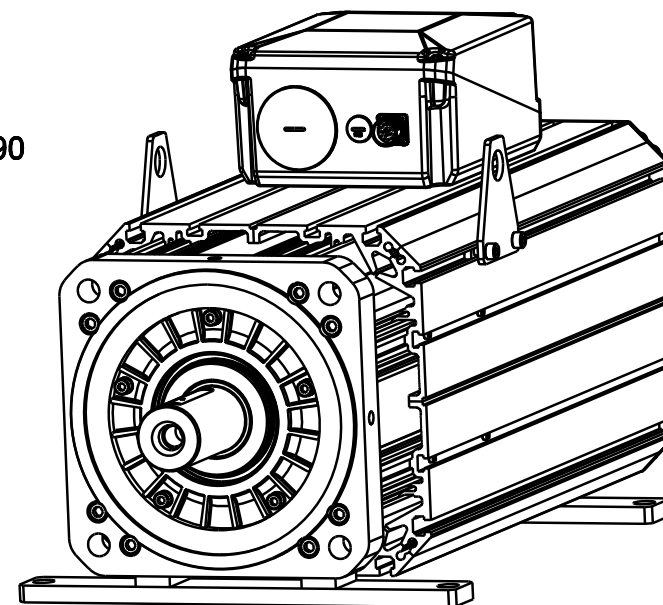



| 3             |                   | 4          |            |
|---------------|-------------------|------------|------------|
| 版本<br>Rev No. | 描述<br>Description | 日期<br>Date | 姓名<br>Name |
|               |                   |            |            |
|               |                   |            |            |

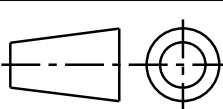



**Option "K": full key 14 x 9 x 90**



 **Signal Connector**  
**Type: M23 Size 1-17 Pin**

| Pin | EnDat<br>Code:C,M,N,U,Q | Resolver<br>Code:R   | SinCos<br>Code:S        |
|-----|-------------------------|----------------------|-------------------------|
| 1   | A+                      | n.c.                 | A+                      |
| 2   | A-                      | n.c.                 | A-                      |
| 3   | DATA+                   | n.c.                 | I-(index)               |
| 4   | PTC+                    | Sin+, 1 o/r          | Sin-(C), 1 o/r          |
| 5   | CLOCK+                  | Cos+, 1 o/r          | Cos-(D+), 1 o/r         |
| 6   | COS-, 1 o/r             | COS-, 1 o/r          | Cos-(D-), 1 o/r         |
| 7   | 0 V                     | RESEX+               | 0 V                     |
| 8   | KTY84+ <sup>oo</sup>    | KTY84+ <sup>oo</sup> | PTC+                    |
| 9   | KTY84- <sup>oo</sup>    | KTY84- <sup>oo</sup> | PTC-/KTY- <sup>oo</sup> |
| 10  | +Vcc                    | RESEX-               | +Vcc(S/Vdc)             |
| 11  | B+                      | n.c.                 | B+                      |
| 12  | B-                      | n.c.                 | B-                      |
| 13  | DATA-                   | n.c.                 | I+(index)               |
| 14  | CLOCK-                  | Sin+, 1 o/r          | Sin-(C-), 1 o/r         |
| 15  | 0V sense                | n.c.                 | 0V sense                |
| 16  | Vcc sense               | PTC+                 | +Vcc sense              |
| 17  | PTC-                    | PTC-                 | KTY- <sup>oo</sup>      |

|  |  |   |  |   |  |
|--|--|---|--|---|--|
| 材质<br>Material   |  |  |  | 项目<br>Project-Prod.item/Instrument  |  |
| 处理<br>Treatment  |  |   |  | U31330F203  |  |
| 几何公差<br>GB/T1184 (ISO 2768-2) Geometrical tolerance                    |  | K   |  | 描述<br>Description<br><b>MOTOR ASSEMBLY LONG</b>   |  |
| 未注公差<br>GB/T1804 (ISO 2768-2) Linear tolerance                         |  | m   |  |   |  |
| 角度公差<br>GB/T1184 (ISO 2768-1) Angular tolerance                        |  | ±1°   |  | 电机总装<br> |  |
| 0.5<br>+3<br>±0.1  |  | >3+<br>6<br>±0.1  |  |   |  |
| >6+<br>30<br>±0.2  |  | >30+<br>120<br>±0.3   |  | 图号<br>Drawing No.<br><b>50266N-0-A-3</b>  |  |
| >120<br>+400<br>±0.5   |  | >1000<br>+2000<br>±0.8  |  |   |  |
| >2000<br>+4000<br>±2   |  | >1000<br>+2000<br>±1.2  |  | 版本<br>Rev<br>比例<br>Scale<br><b>1:5</b>  |  |
| 设计<br>Designed<br>12/11/09<br>绘图<br>Drawn<br>21/09/12<br>校对<br>Checked |  | 名字<br>Name<br>PMC<br>PMCNB  |  | 重量<br>Kg<br>Mass<br>176.570   |  |
|  |  | 数量<br>Qty<br>1/1  |  | 页码<br>Sheet<br>1/1  |  |