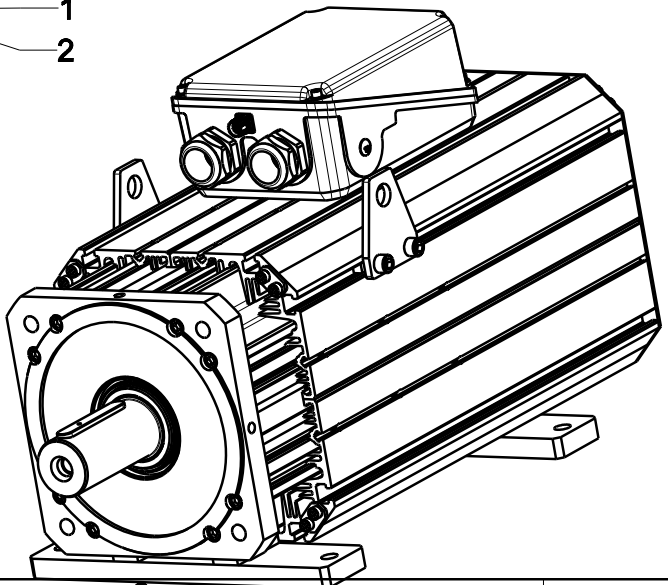
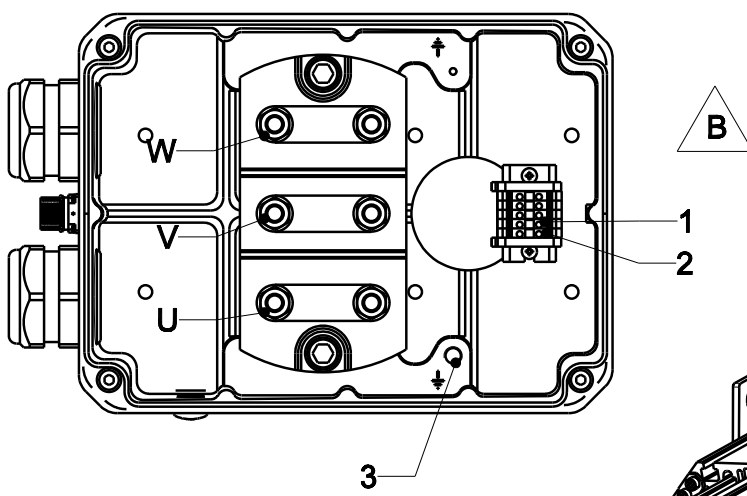
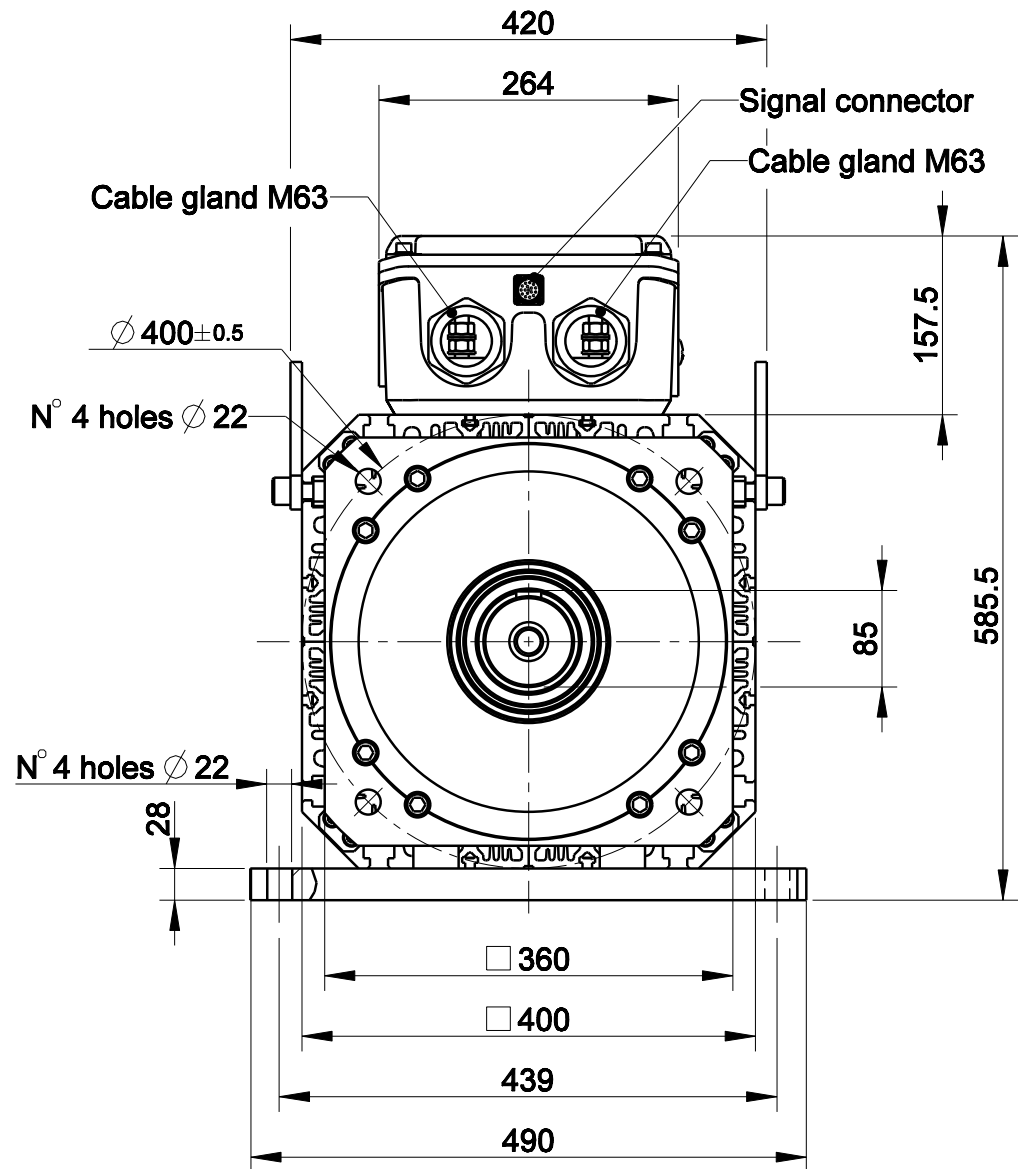
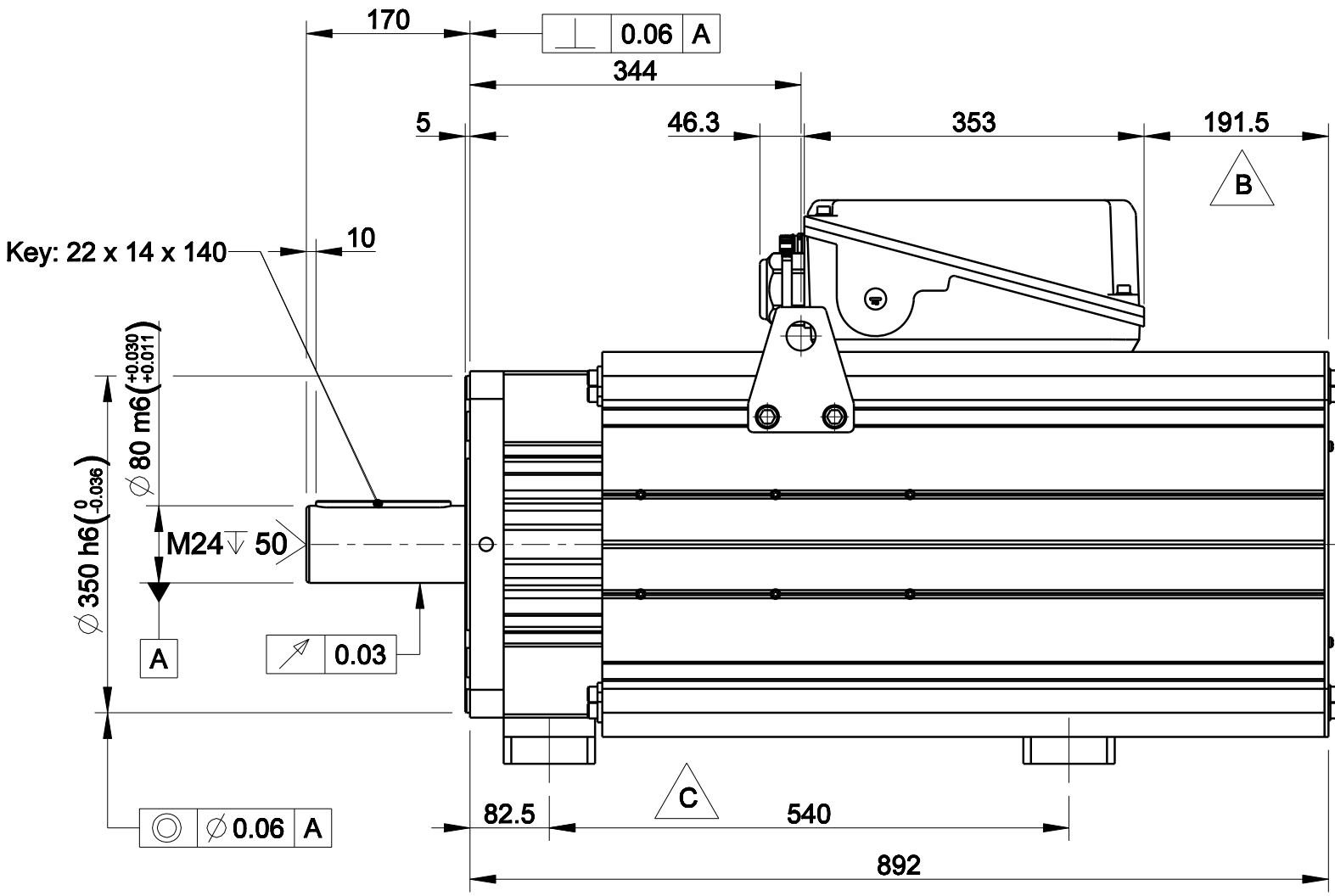
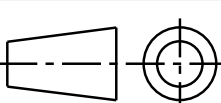



1		2		3		4	
版本 Rev No.		描述 Description		日期 Date		姓名 Name	
B		Modified connection box,and dimensions		7/1/14		Nifangliang	
C		modified dimensions and update the motor assembly		16/2/14		Nifangliang	



Nr.	FUNCTION
1	FAN POWER
2	FAN POWER
3	GND

材质 Material				项目 Project-Prod.item/Instrument									
处理 Treatment				U318070F.15.3									
几何公差 GB/T1184 (ISO 2768-2) Geometrical tolerance		K		<div>未注倒角 Undimensioned chamfers</div> <div>1x45°</div>	描述 Description MOTOR ASSEMBLY								
未注公差 GB/T1804 (ISO 2768-2) Linear tolerance		m											
角度公差 GB/T1804 (ISO 2768-1) Angular tolerance		±1°											
0.5 +3	>3+ 6	>6+ 30	>30+ 120	>120 +400	>400+ 1000	>1000 +2000	>2000 +4000	<div>未注圆角 Undimensioned radii</div> <div>R0,5</div>	电机总装				
±0.1	±0.1	±0.2	±0.3	±0.5	±0.8	±1.2	±2						
年,月,日 Date		名字 Name		<div>PHASE</div> <div>MOTION CONTROL</div>  <div>宁波菲仕运动控制技术有限公司 NINGBO PHASE MOTION CONTROL CO.,LTD.</div>			图号 Drawing No.		版本 Rev	C			
设计 Designed							54071N-2-C-3		比例 Scale	3:20			
绘图 Drawn									重量 Kg Mass	425.718	数量 Qty	页码 Sheet	1/1
校对 Checked													