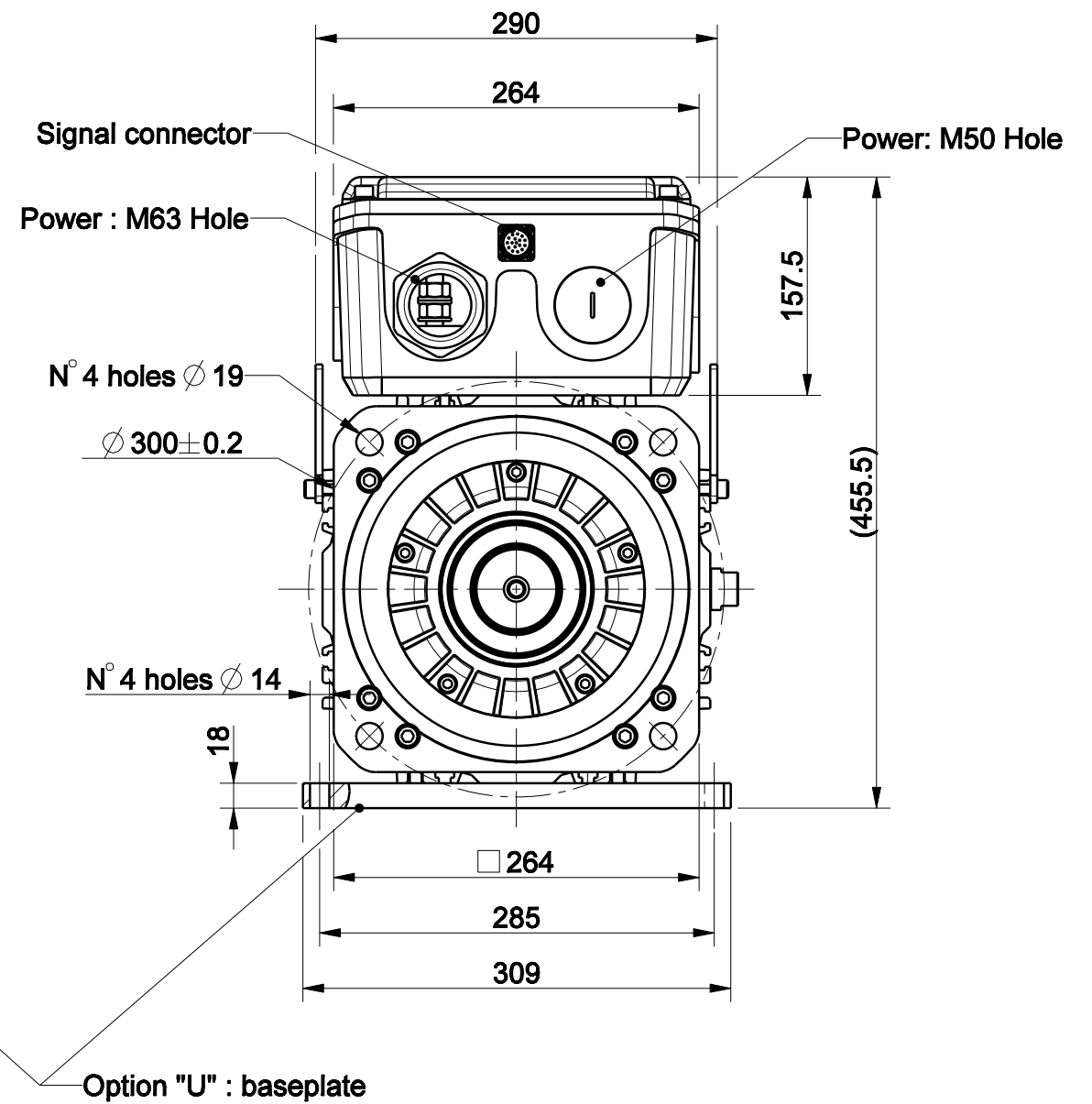
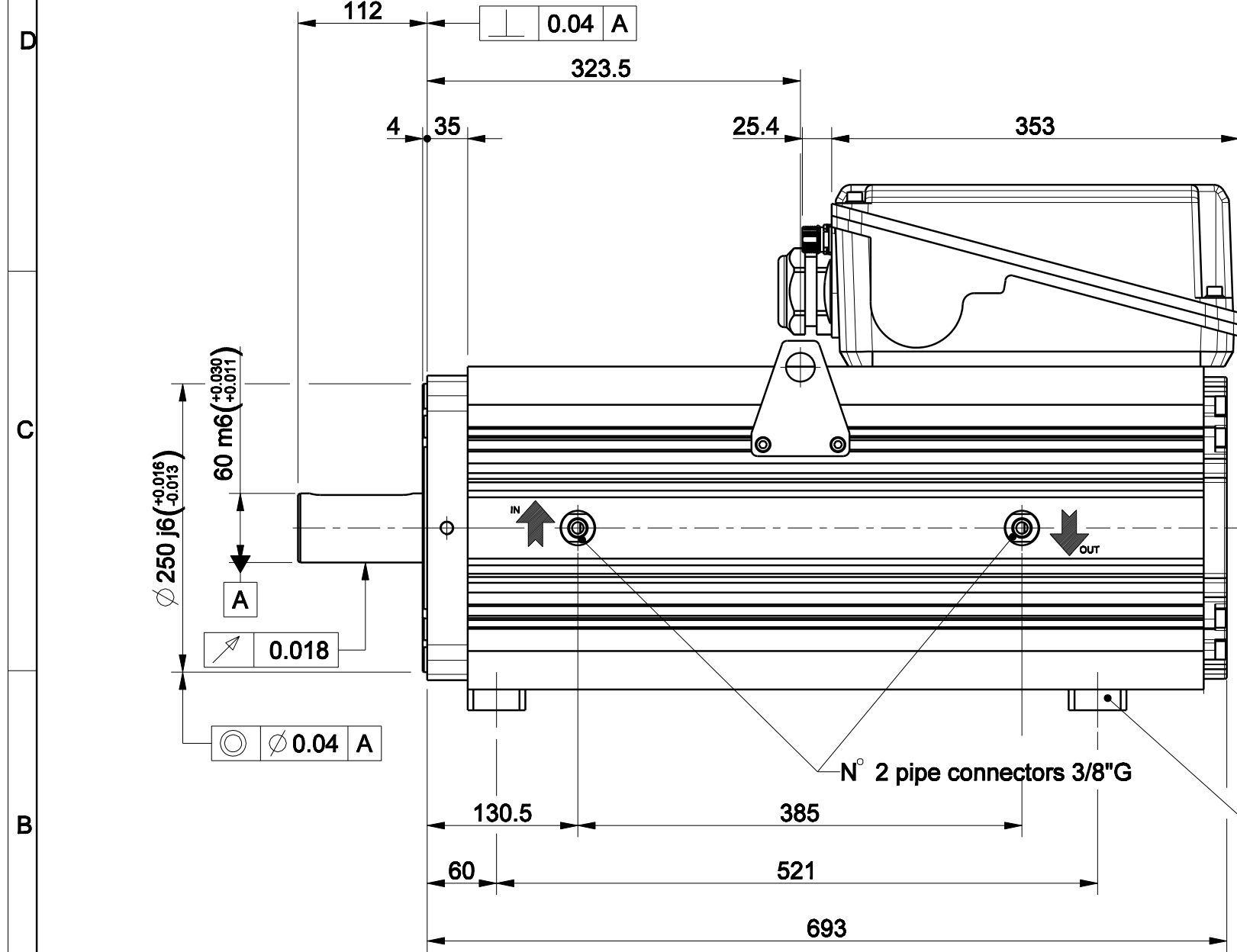
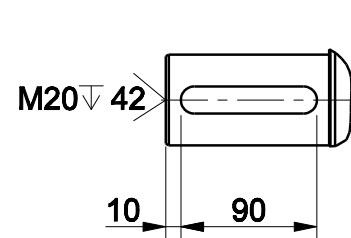


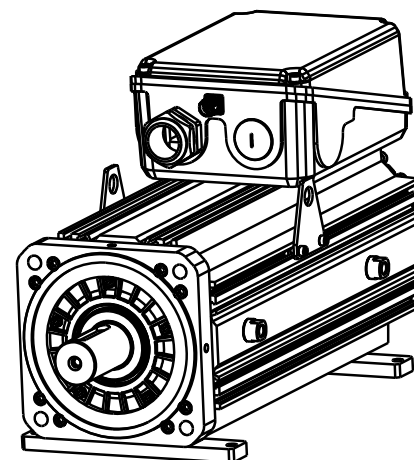
1		2		3		4	
版本 Rev No.		描述 Description		日期 Date		姓名 Name	

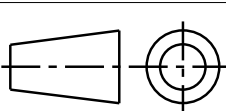


Signal Connector Type: M23 Size 1-17 Pin			
Pin	EnDat Code: C, M, N, U, Q	Resolver Code: R	SinCos Code: S
1	A+	n.c.	A+
2	A-	n.c.	A-
3	DATA+	n.c.	I+(index)
4	PTC+	SIN-, 1 c/r	Sin-(C-), 1 c/r
5	CLOCK+	COS+, 1 c/r	Cos+(D-), 1 c/r
6	n.c.	COS-, 1 c/r	Cos-(D+), 1 c/r
7	0 V	RESEX+	0 V
8	KTY84+**	KTY84+**	PTC+
9	KTY84-**	KTY84-**	PTC-/KTY-**
10	+Vcc	RESEX-	+Vcc(5Vdc)
11	B+	n.c.	B+
12	B-	n.c.	B-
13	DATA-	n.c.	I-(index)
14	CLOCK-	SIN+, 1 c/r	Sin+(C+), 1 c/r
15	0V sense	n.c.	0V sense
16	Vcc sense	PTC+	+Vcc sense
17	PTC-	PTC-	KTY+**



Option "K" : full key 18 x 11 x 90



材质 Material						项目 Project-Prod.item/Instrument	
处理 Treatment						U31340C303	
几何公差 GB/T1184 (ISO 2768-2) Geometrical tolerance		K		未注倒角 Undimensioned chamfers		描述 Description	
未注公差 GB/T1804 (ISO 2768-1) Linear tolerance		m		1x45°		MOTOR ASSEMBLY LONG	
角度公差 GB/T1804 (ISO 2768-1) Angular tolerance		m					
0.5 +3	>3+ 6	>6+ 30	>30+ 120	>120 +400	>400+ 1000	>1000 +2000	>2000 +4000
±0.1	±0.1	±0.2	±0.3	±0.5	±0.8	±1.2	±2
		年,月,日 Date		名字 Name		图号 Drawing No.	
设计 Designed						67985N-3-A-3	
校对 Checked						版本 Rev	
审核 Approved						比例 Scale	
						A	
						1:5	
						1/1	
						1/1	