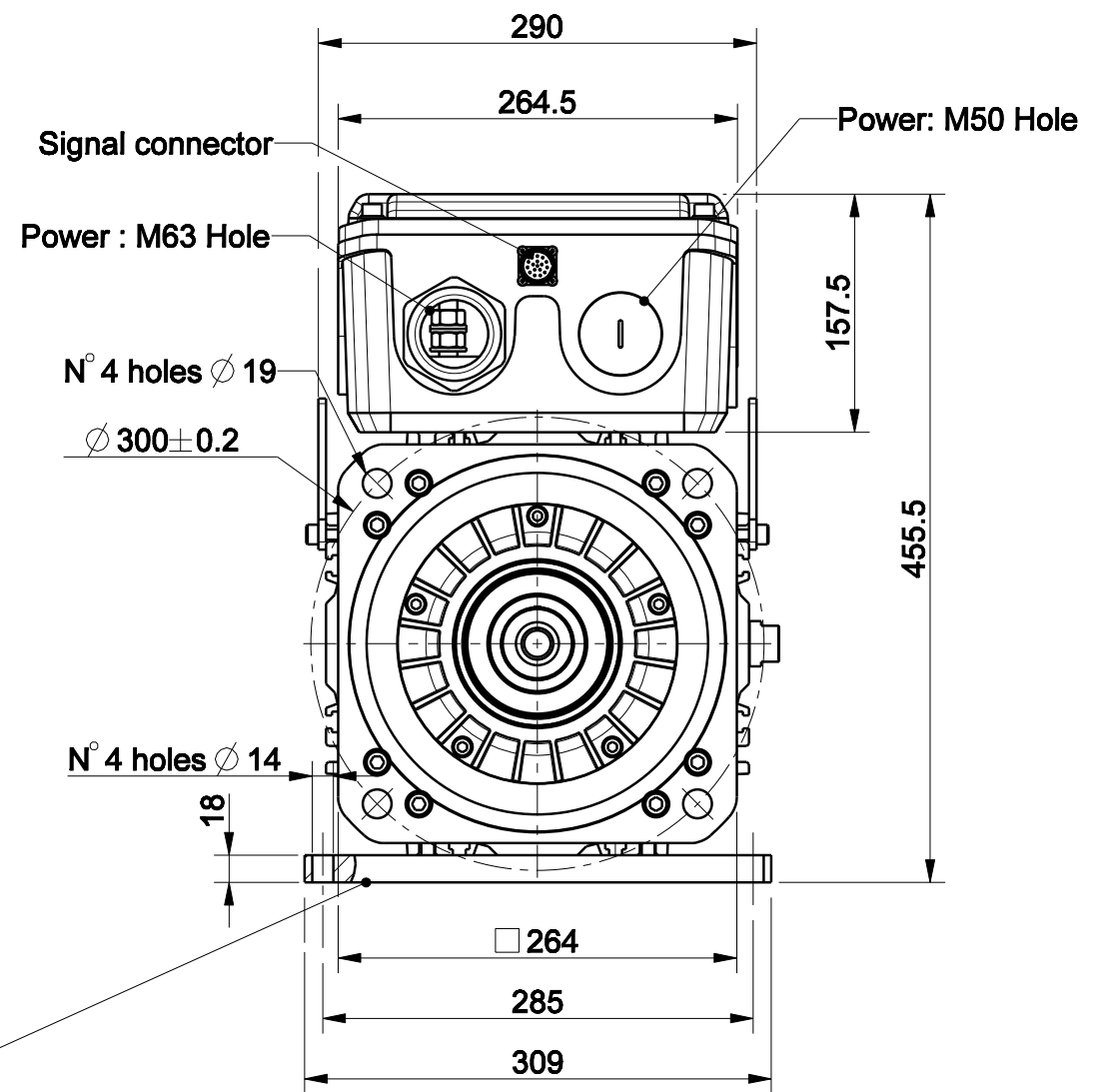
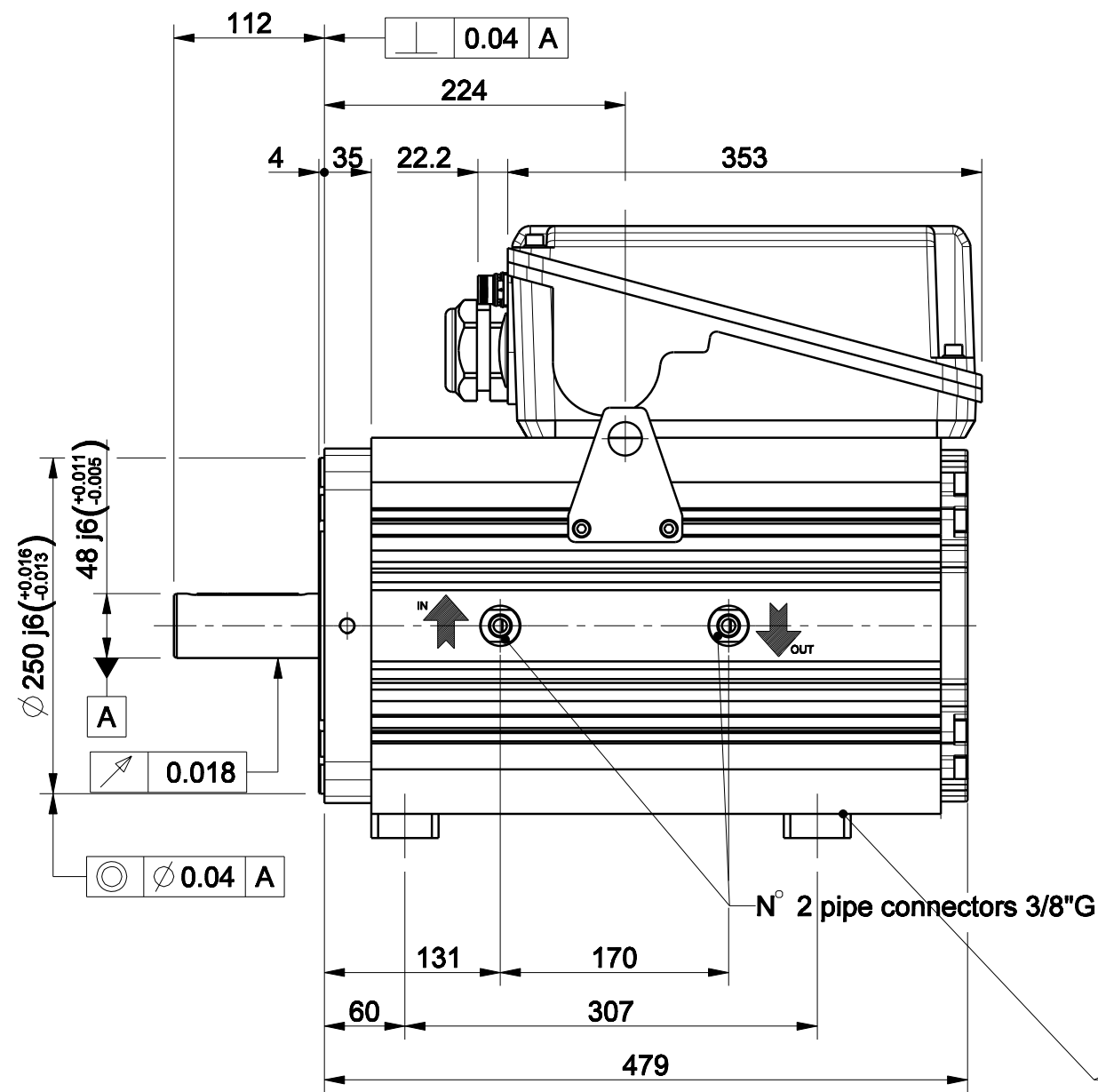


1		2		3		4	
版本 Rev No.		描述 Description		日期 Date		姓名 Name	

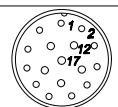


Option "U" : baseplate

Approved

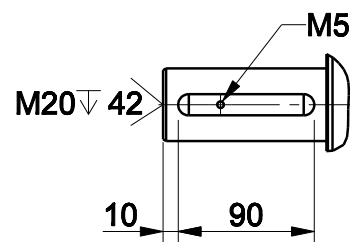
Signature

Date

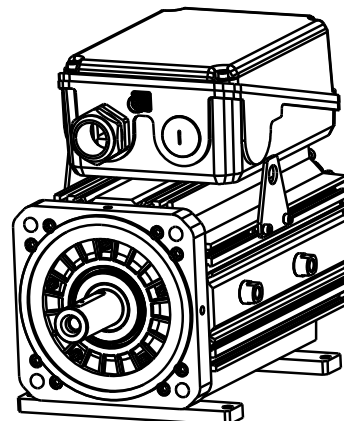


Signal Connector  
Type: M23 Size 1-17 Pin

Pin	EnDat Code:C,M,N,U,Q	Resolver Code:R	SinCos Code:S
1	A+	n.c.	A+
2	A-	n.c.	A-
3	DATA+	n.c.	I+(index)
4	PTC+	SIN-,1 c/r	Sin-(C-),1 c/r
5	CLOCK+	COS-,1 c/r	Cos-(D-),1 c/r
6	n.c.	COS-,1 c/r	Cos-(D+),1 c/r
7	0 V	RESEX+	0 V
8	KTY84+**	KTY84+**	PTC+
9	KTY84-**	KTY84-**	PTC-/KTY-**
10	+Vcc	RESEX-	+Vcc(5Vdc)
11	B+	n.c.	B+
12	B-	n.c.	B-
13	DATA-	n.c.	I-(index)
14	CLOCK-	SIN+,1 c/r	Sin+(C+),1 c/r
15	0V sense	n.c.	0V sense
16	Vcc sense	PTC+	+Vcc sense
17	PTC-	PTC-	KTY+**



Option "K" : full key 14 x 9 x 90



材质 Material		处理 Treatment		项目 Project-Prod.item/Instrument	
几何公差 GB/T1184 (ISO 2768-2) Geometrical tolerance		K		U31320C303	
未注公差 GB/T1804 (ISO 2768-1) Linear tolerance		m		描述 Description	
角度公差 GB/T1804 (ISO 2768-1) Angular tolerance		m		1x45°	
0.5 +3		>3+ 6		未注圆角 Undimensioned chamfers	
>6+ 30		>120 +400		未注圆角 Undimensioned radii	
>1000 +2000		>2000 +4000		R0,5	
±0.1		±0.1		电机总装	
±0.2		±0.3		图号 Drawing No.	
±0.5		±0.8		67983N-3-A-3	
±1.2		±2		版本 Rev	
年,月,日 Date		名字 Name		A	
设计 Designed				比例 Scale	
校对 Checked				1:5	
审核 Approved				页码 Sheet	
				1/1	



宁波菲仕运动控制技术有限公司  
NINGBO PHASE MOTION CONTROL CO.,LTD.

重量  
Kg  
Mass

133.185

数量  
Qty

1/1