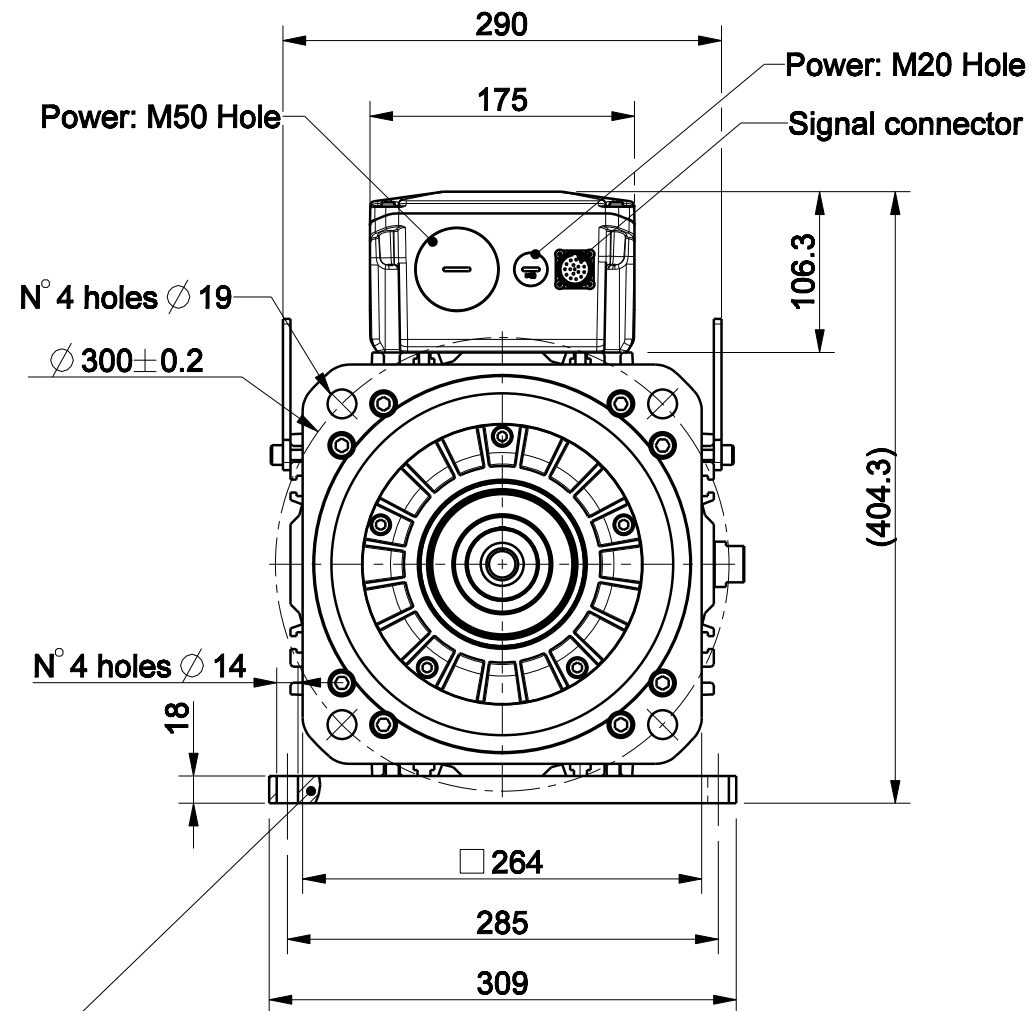
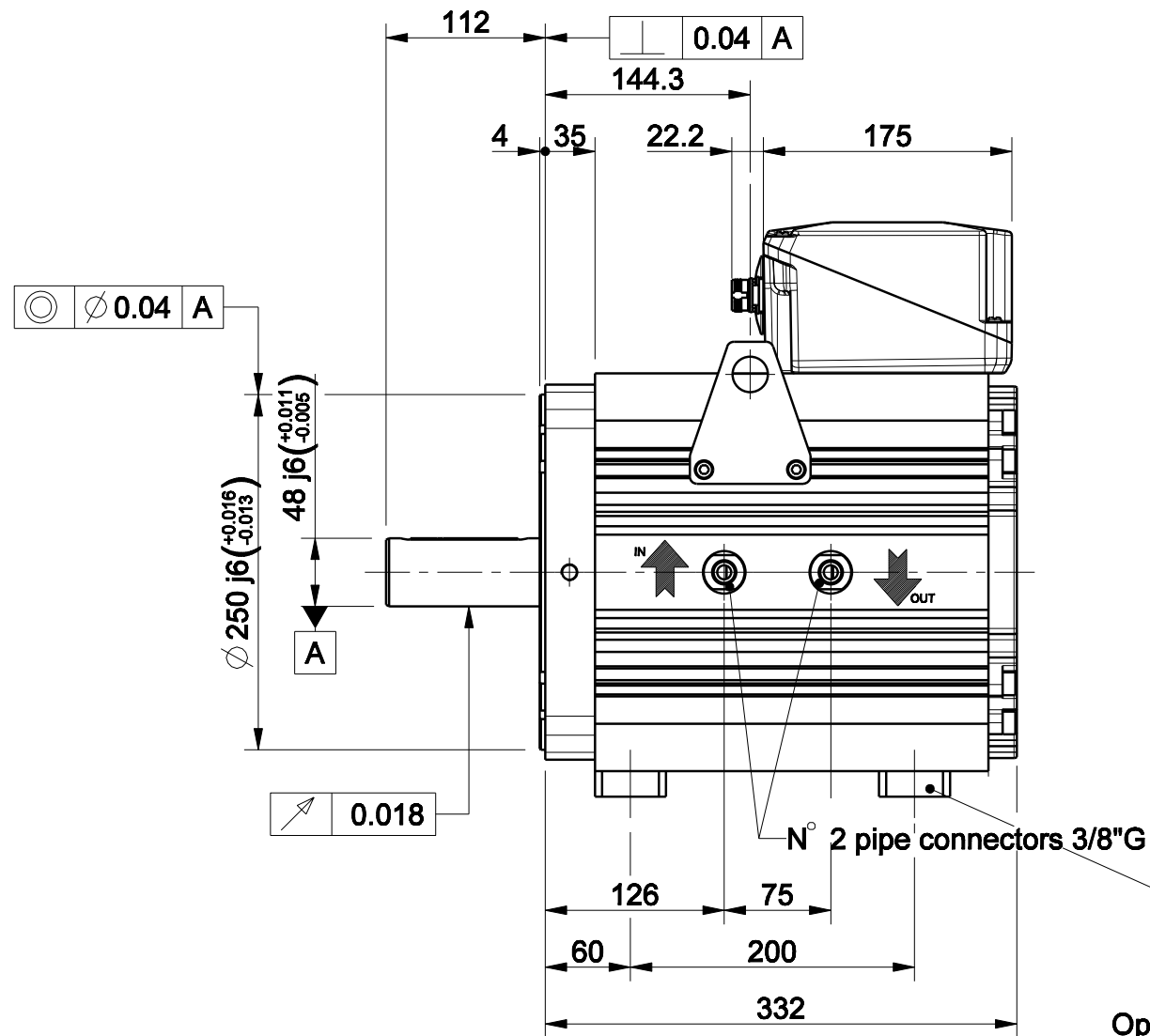
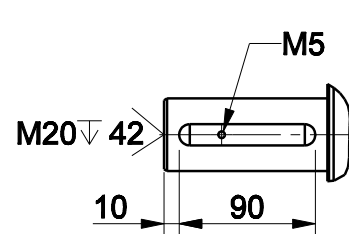


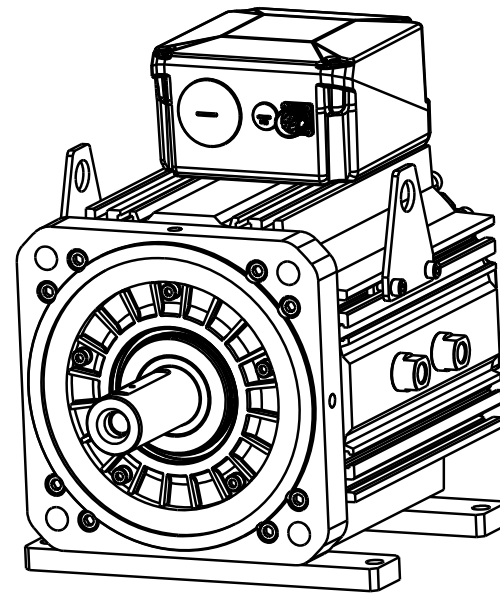
1		2		3		4	
版本 Rev No.		描述 Description		日期 Date		姓名 Name	



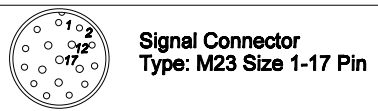
Option "U" : baseplate



Option "K" : full key 14 x 9 x 90

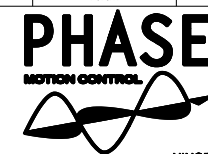


Approved	
Signature	Date



Pin	EnDat Code:C,M,N,U,Q	Resolver Code:R	SinCos Code:S
1	A+	n.c.	A+
2	A-	n.c.	A-
3	DATA+	n.c.	I+(index)
4	PTC+	SIN+,1 c/r	Sin+(C+),1 c/r
5	CLOCK+	COS+,1 c/r	Cos+(D+),1 c/r
6	n.c.	COS-,1 c/r	Cos-(D-),1 c/r
7	0 V	RESEX+	0 V
8	KTY84+**	KTY84+**	PTC+
9	KTY84-**	KTY84-**	PTC-KTY-**
10	+Vcc	RESEX-	+Vcc(5Vdc)
11	B+	n.c.	B+
12	B-	n.c.	B-
13	DATA-	n.c.	I-(index)
14	CLOCK-	SIN-,1 c/r	Sin-(C-),1 c/r
15	0V sense	n.c.	0V sense
16	Vcc sense	PTC+	+Vcc sense
17	PTC-	PTC-	KTY+**

材质 Material		处理 Treatment		项目 Project-Prod.item/Instrument	
几何公差 GB/T1184 (ISO 2768-2) Geometrical tolerance		K		U31310C103	
未注公差 GB/T1804 (ISO 2768-1) Linear tolerance		m		描述 Description	
角度公差 GB/T1804 (ISO 2768-1) Angular tolerance		m		1x45°	
0.5 +3		>3+ 6		未注圆角 Undimensioned chamfers	
±0.1		±0.1		R0,5	
±0.1		±0.2		未注圆角 Undimensioned radii	
±0.1		±0.3		电机总装	
±0.1		±0.5		图号 Drawing No.	
±0.1		±0.8		67982N-0-A-3	
±0.1		±1.2		版本 Rev	
±0.1		±2		A	
设计 Designed		名字 Name		比例 Scale	
校对 Checked				1:5	
审核 Approved				页码 Sheet	
				1/1	



NINGBO Ltd.
宁波菲仕电机技术有限公司