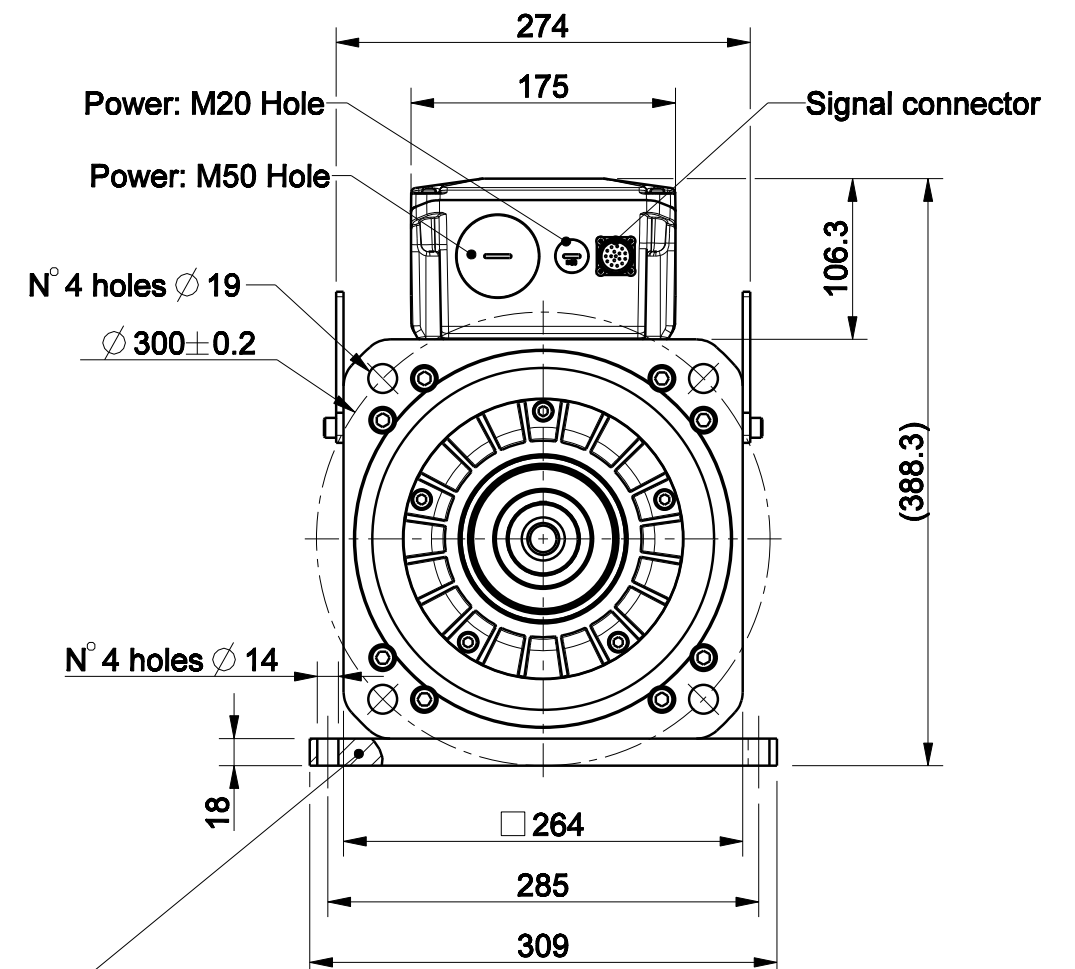
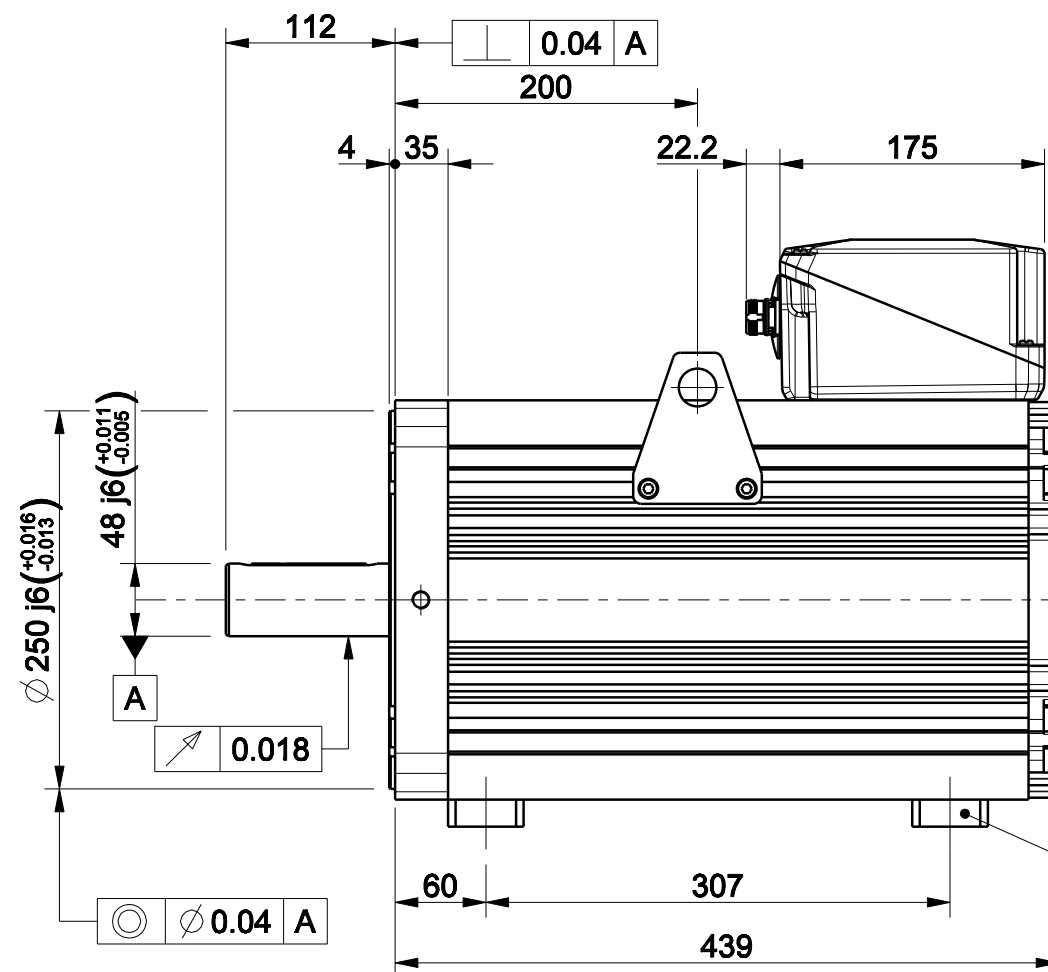
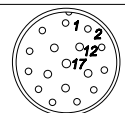


3		4	
版本 Rev No.	描述 Description	日期 Date	姓名 Name

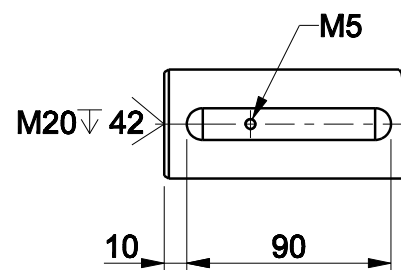


Option "U" : baseplate

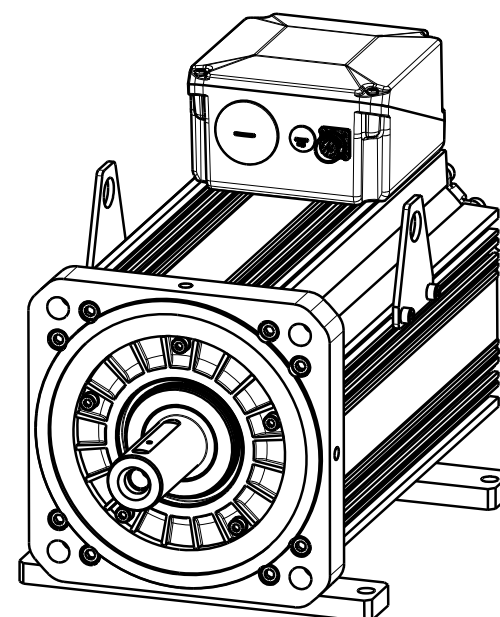


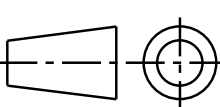

Signal Connector
Type: M23 Size 1-17 Pin

Pin	EnDat Code:C,M,N,U,Q	Resolver Code:R	SinCos Code:S
1	A+	n.c.	A+
2	A-	n.c.	A-
3	DATA+	n.c.	I(index)
4	PTC+	SIN-,1 c/r	Sin-(C-),1 c/r
5	CLOCK+	COS+,1 c/r	Cos-(D-),1 c/r
6	n.c.	COS-,1 c/r	Cos-(D+),1 c/r
7	0 V	RESEX+	0 V
8	KTY84+ ^{xx}	KTY84+ ^{xx}	PTC+
9	KTY84- ^{xx}	KTY84- ^{xx}	PTC-KTY- ^{xx}
10	+Vcc	RESEX-	+Vcc(Vdc)
11	B+	n.c.	B+
12	B-	n.c.	B-
13	DATA-	n.c.	I-(index)
14	CLOCK-	SIN+,1 c/r	Sin+(C+),1 c/r
15	0V sense	n.c.	0V sense
16	Vcc sense	PTC+	+Vcc sense
17	PTC-	PTC-	KTY- ^{xx}



Option "K" : full key 14 x 9 x 90



材质 Material				项目 Project-Prod.item/Instrument	
处理 Treatment				U31320103	
几何公差 GB/T1184 (ISO 2768-2) Geometrical tolerance		K		描述 Description MOTOR ASSEMBLY	
未注公差 GB/T1804 (ISO 2768-1) Linear tolerance		m			
角度公差 GB/T1804 (ISO 2768-1) Angular tolerance		m			
0.5 +3 ±0.1		>3+ 6 ±0.1		>6+ 30 ±0.2	
>30+ 120 ±0.3		>120 +400 ±0.5		>400+ 1000 ±0.8	
>1000 +2000 ±1.2		>2000 +4000 ±2		未注圆角 Unimensioned radii R0,5	
年,月,日 Date		名字 Name		图号 Drawing No. 51553N-0-A-3	
设计 Designed				版本 Rev 比例 Scale 1:5	
校对 Checked				重量 Kg Mass 118.617	
审核 Approved				数量 Qty 1/1	