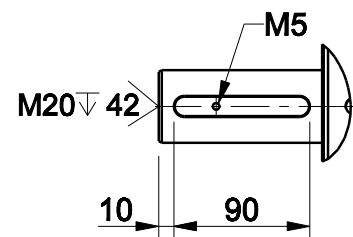
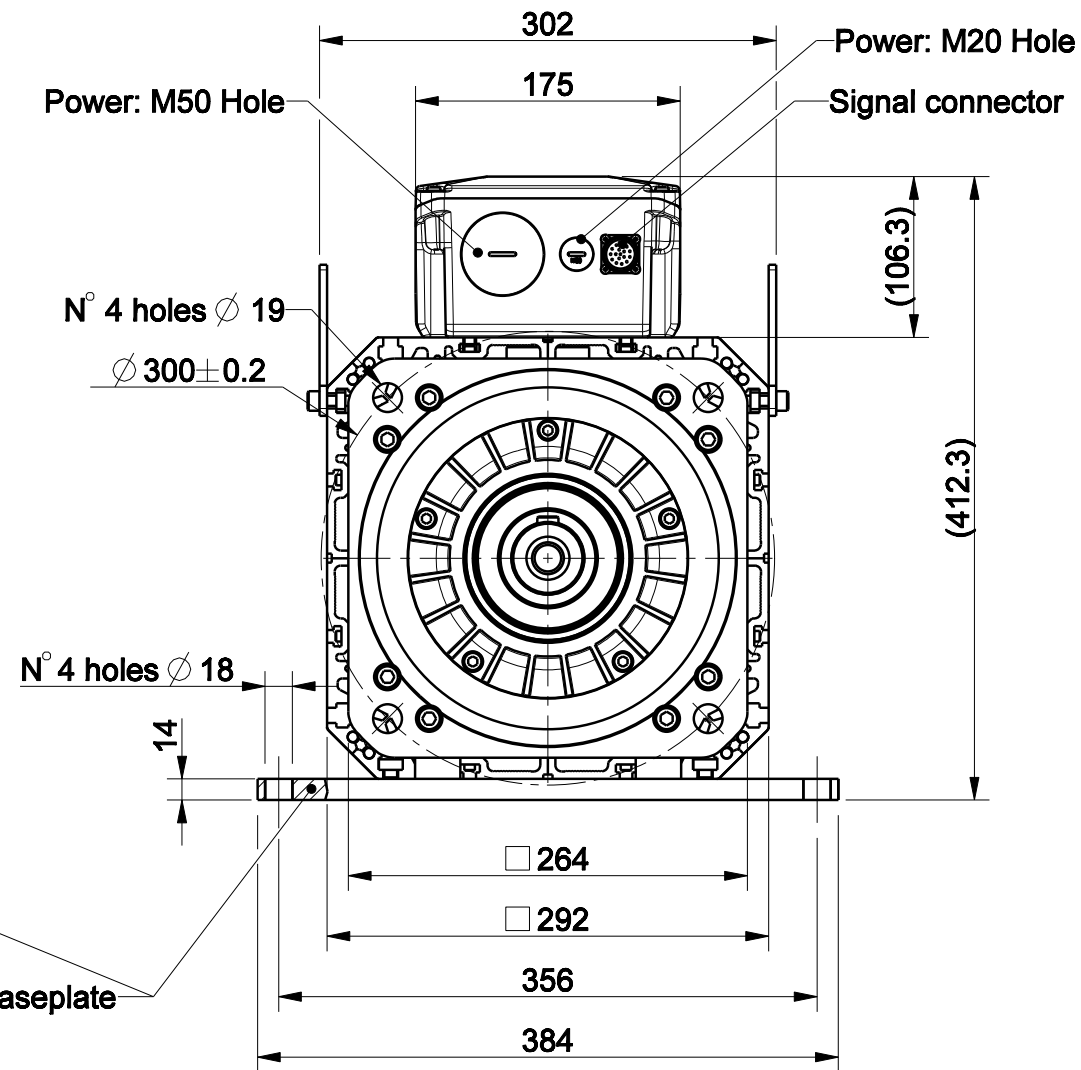
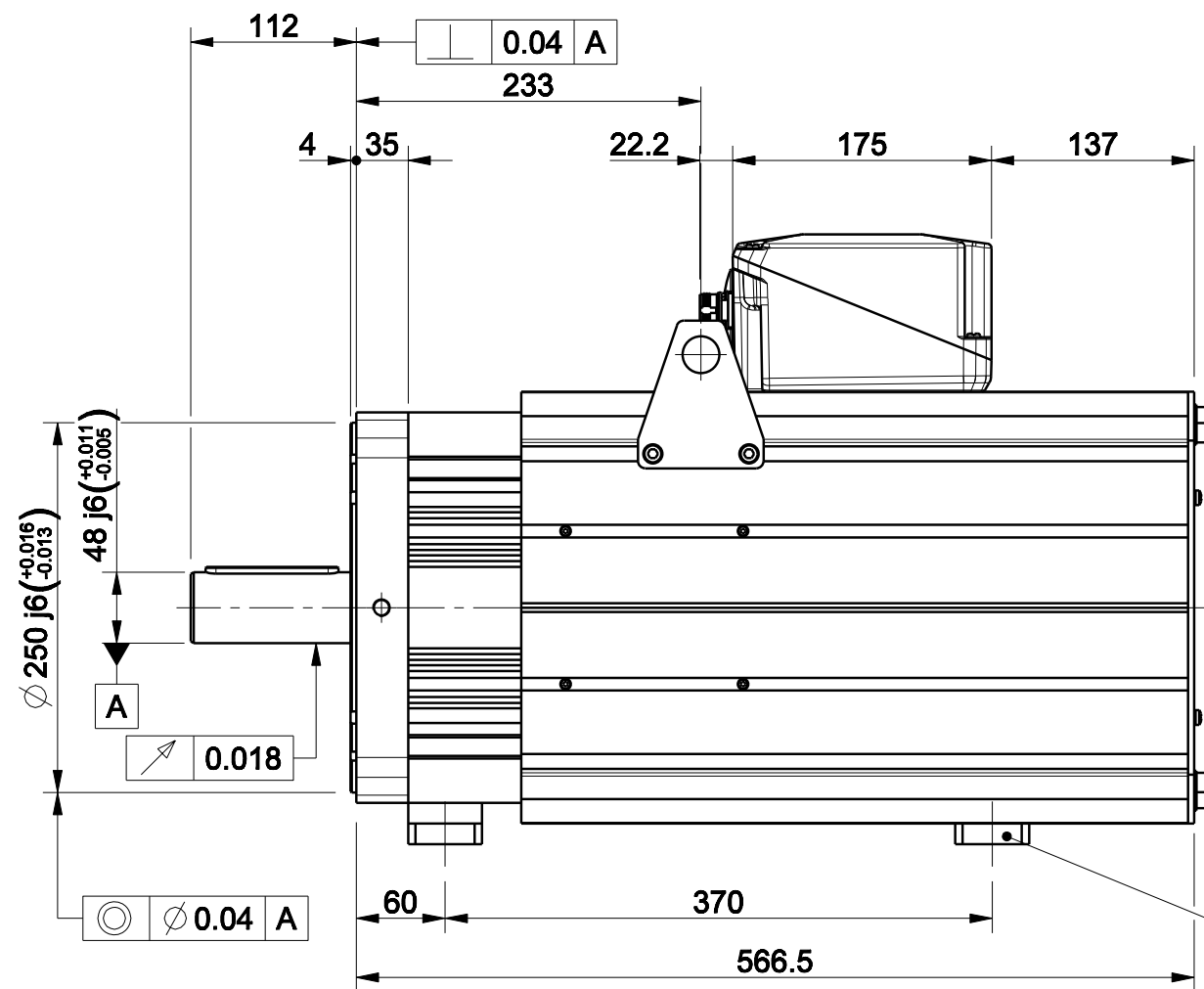
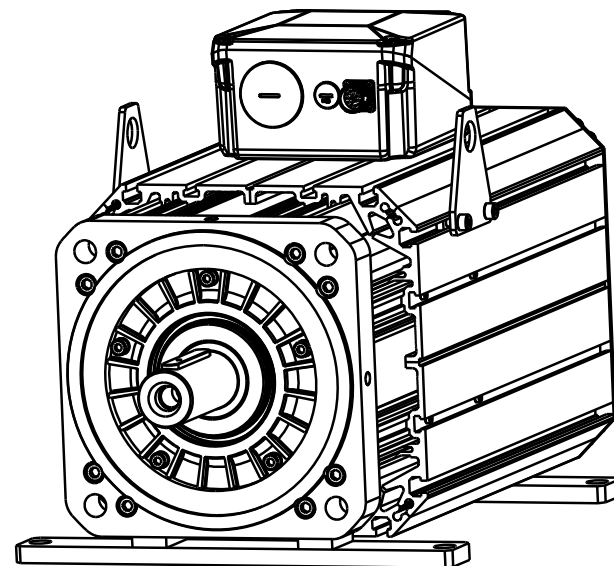


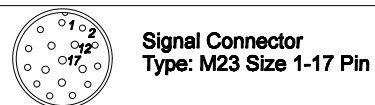
1		2		3		4	
版本 Rev No.		描述 Description		日期 Date		姓名 Name	



Option "K": full key 14 x 9 x 90



Option "U": baseplate



Pin	EnDat Code:C,M,N,U,Q	Resolver Code:R	SinCos Code:S
1	A+	n.c.	A+
2	A-	n.c.	A-
3	DATA+	n.c.	I+(Index)
4	PTC+	SIN-,1 a/r	Sin-(C-),1 a/r
5	CLOCK+	COS+,1 a/r	Cos+(D-),1 a/r
6	n.c.	COS-,1 a/r	Cos-(D+),1 a/r
7	0 V	RESEX+	0 V
8	KTY84+ <sup>***</sup>	KTY84+ <sup>***</sup>	PTC+
9	KTY84- <sup>***</sup>	KTY84- <sup>***</sup>	PTC-/KTY- <sup>***</sup>
10	+Vcc	RESEX-	+Vcc(5Vdc)
11	B+	n.c.	B+
12	B-	n.c.	B-
13	DATA-	n.c.	I-(Index)
14	CLOCK-	SIN+,1 a/r	Sin+(C+),1 a/r
15	0V sense	n.c.	0V sense
16	Vcc sense	PTC+	+Vcc sense
17	PTC-	PTC-	KTY+ <sup>***</sup>

Approved	
Signature	Date

材质 Material		项目 Project-Prod.item/Instrument	
处理 Treatment		U31320F103	
几何公差 GB/T1184 (ISO 2768-2) Geometrical tolerance		描述 Description	
未注公差 GB/T1804 (ISO 2768-1) Linear tolerance		MOTOR ASSEMBLY	
角度公差 GB/T1804 (ISO 2768-1) Angular tolerance		电机总装	
0.5 +3		图号 Drawing No.	
±0.1		51565N-0-A-3	
年,月,日 Date		版本 Rev	
名字 Name		A	
设计 Designed		比例 Scale	
校对 Checked		1:5	
审核 Approved		页码 Sheet	
		1/1	
重量 Kg		数量 Qty	
135.290			