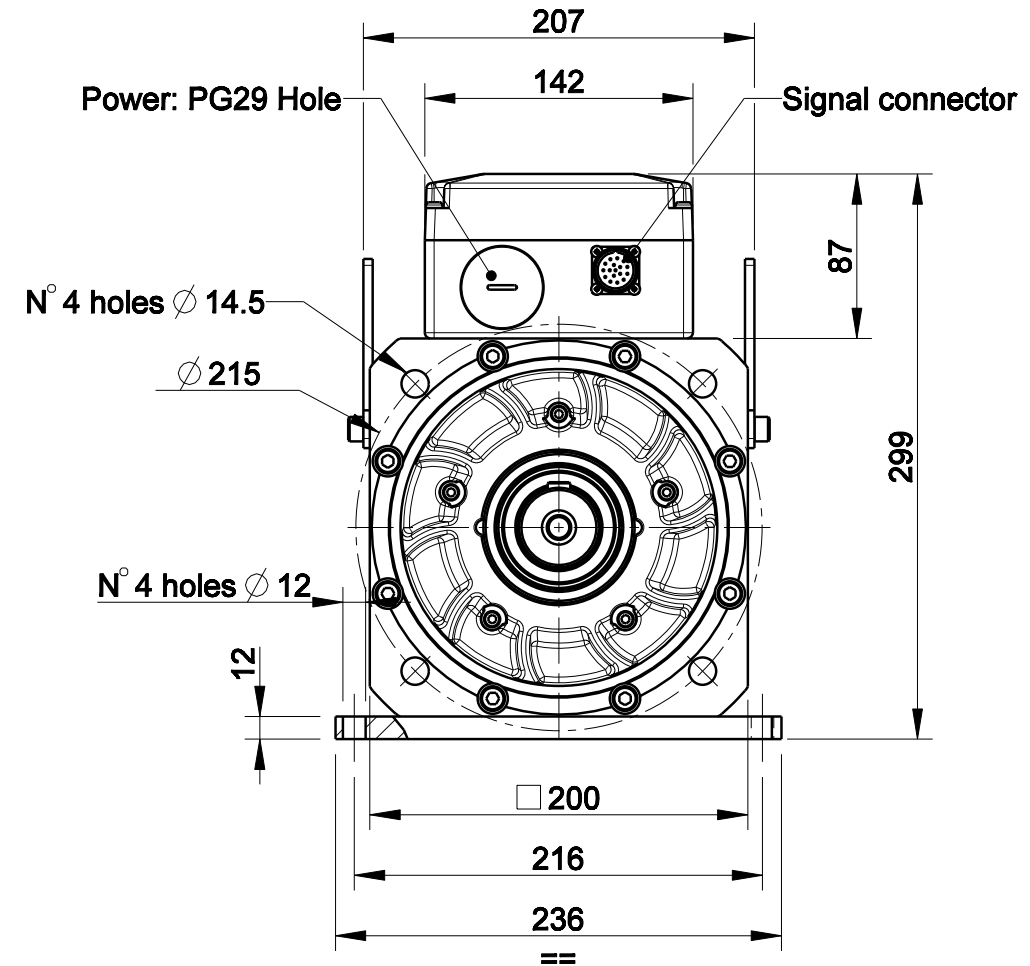
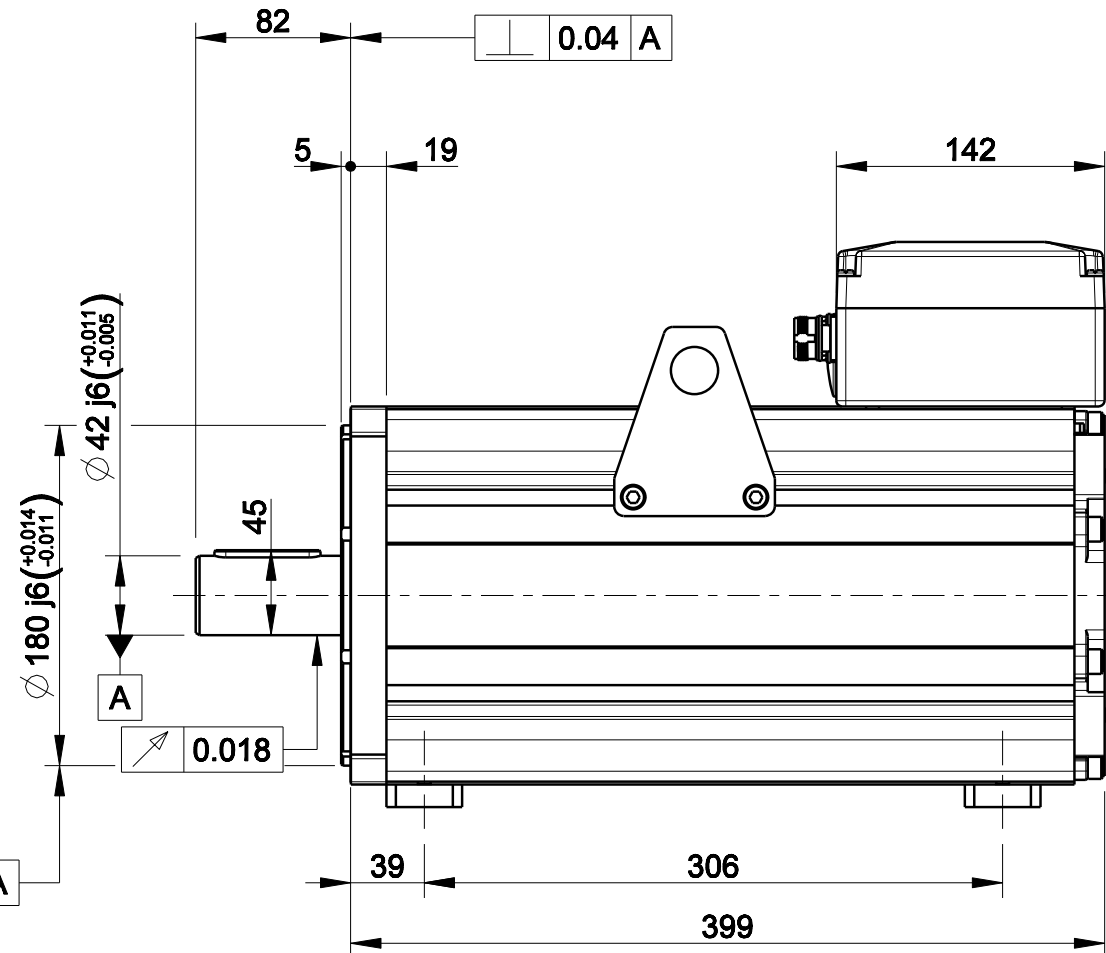


1		2		3		4	
D				版本	描述	日期	姓名
				Rev No.	Description	Date	Name

D

C

B



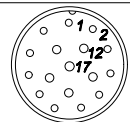
D

C

B

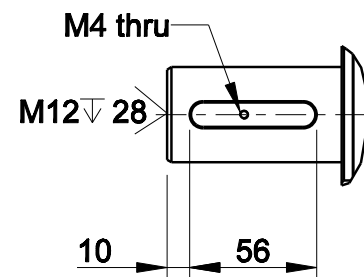
A

A

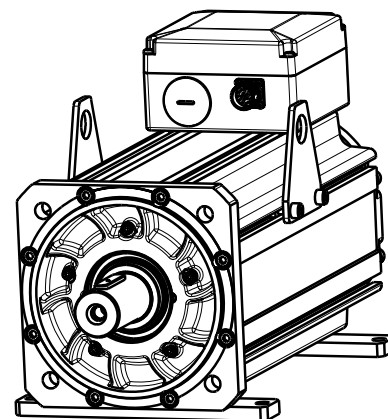


Signal Connector  
Type: M23 Size 1-17 Pin

Pin	EnDat Code:C,M,N,U,Q	Resolver Code:R	SinCos Code:S
1	A+	n.c.	A+
2	A-	n.c.	A-
3	DATA+	n.c.	I+(index)
4	PTC+	SIN-,1 c/r	Sin-(C-),1 c/r
5	CLOCK+	COS-,1 c/r	Cos-(D-),1 c/r
6	n.c.	COS-,1 c/r	Cos-(D+),1 c/r
7	0 V	RESEX+	0 V
8	KTY84+**	KTY84+**	PTC+
9	KTY84-**	KTY84-**	PTC-/KTY-**
10	+Vcc	RESEX-	+Vcc(5Vdc)
11	B+	n.c.	B+
12	B-	n.c.	B-
13	DATA-	n.c.	I-(index)
14	CLOCK-	SIN+,1 c/r	Sin+(C+),1 c/r
15	0V sense	n.c.	0V sense
16	Vcc sense	PTC+	+Vcc sense
17	PTC-	PTC-	KTY+**



Option "K" : full key 12 x 8 x 56



材质 Material				项目 Project-Prod.item/Instrument					
处理 Treatment				U31010A103					
几何公差 GB/T1184 (ISO 2768-2) Geometrical tolerance		K		未注倒角 Undimensioned chamfers	1x45°	描述 Description			
未注公差 GB/T1804 (ISO 2768-2) Linear tolerance		m				MOTOR ASSEMBLY			
角度公差 GB/T1804 (ISO 2768-1) Angular tolerance		±1°		未注圆角 Undimensioned radii	R0,5	电机总装			
0.5 +3	>3+ 6	>6+ 30	>30+ 120			>120 +400	>400+ 1000	>1000 +2000	>2000 +4000
±0.1	±0.1	±0.2	±0.3	±0.5	±0.8	±1.2	±2		
年,月,日 Date		名字 Name				图号 Drawing No.		版本 Rev	A
设计 Designed						50222N-0-A-3		比例 Scale	
绘图 Drawn						重量 Kg Mass		数量 Qty	页码 Sheet
校对 Checked						61.362			1/1

Approved	
Signature	Date

