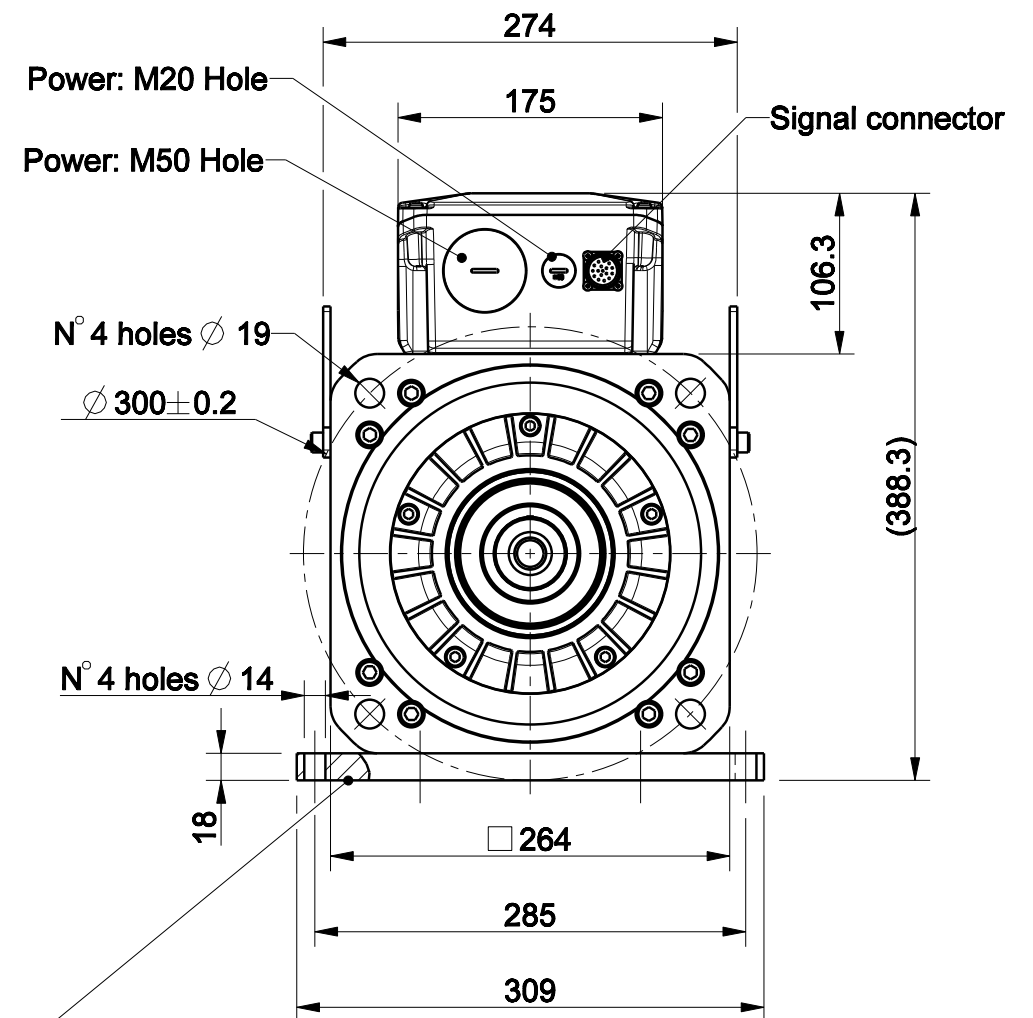
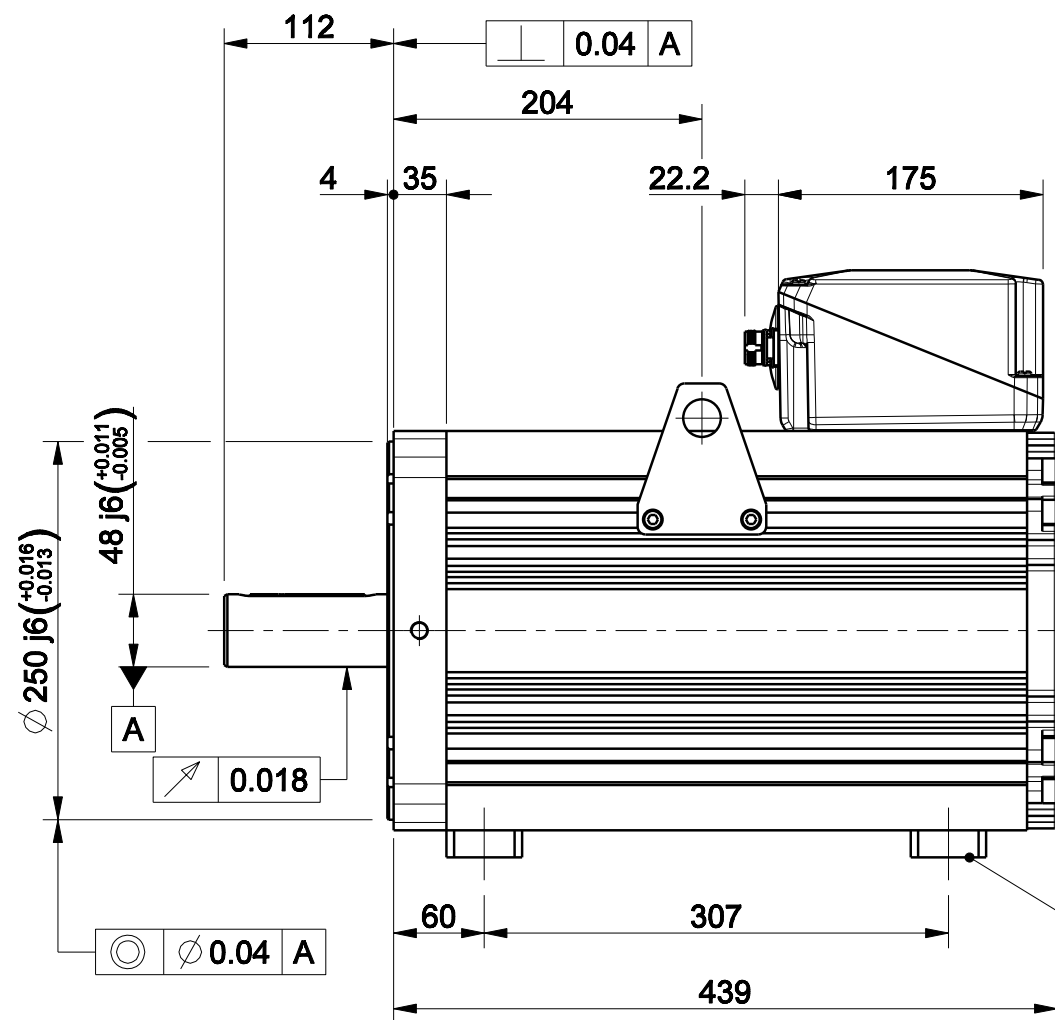
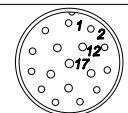


1		2		3		4	
版本 Rev No.		描述 Description		日期 Date		姓名 Name	

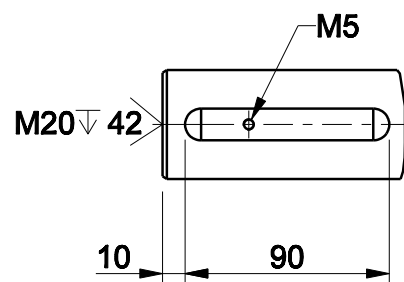


Option "U" : baseplate

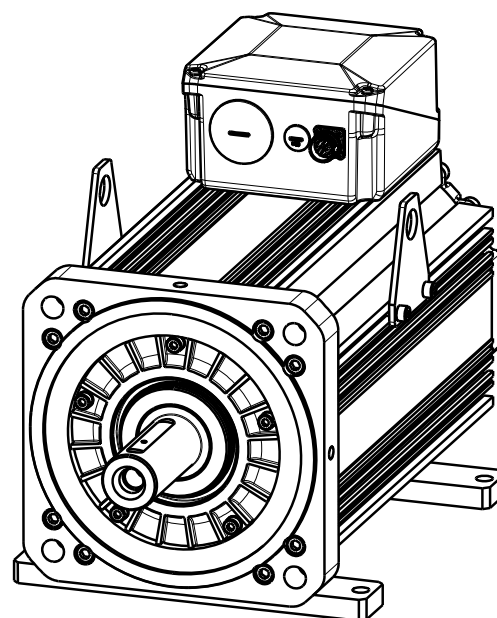


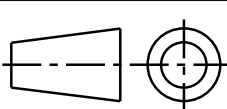

Signal Connector
Type: M23 Size 1-17 Pin

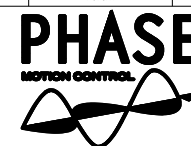
Pin	EnDat Code:C,M,N,U,Q	Resolver Code:R	SinCos Code:S
1	A+	n.c.	A+
2	A-	n.c.	A-
3	DATA+	n.c.	I+(index)
4	PTC+	SIN-,1 c/r	Sin-(C-),1 c/r
5	CLOCK+	COS+,1 c/r	CoS+(D-),1 c/r
6	n.c.	COS-,1 c/r	CoS-(D+),1 c/r
7	0 V	RESEX+	0 V
8	KTY84+**	KTY84+**	PTC+
9	KTY84+**	KTY84+**	PTC-/KTY+**
10	+Vcc	RESEX-	+Vcc(5Vdc)
11	B+	n.c.	B+
12	B-	n.c.	B-
13	DATA-	n.c.	I-(index)
14	CLOCK-	SIN+,1 c/r	Sin+(C+),1 c/r
15	0V sense	n.c.	0V sense
16	Vcc sense	PTC+	+Vcc sense
17	PTC-	PTC-	KTY+**



Option "K" : full key 14 x 9 x 90



材质 Material						项目 Project-Prod.item/Instrument				
处理 Treatment						U31320303				
几何公差 GB/T1184 (ISO 2768-2) Geometrical tolerance		K		未注倒角 Undimensioned chamfers		描述 Description				
未注公差 GB/T1804 (ISO 2768-1) Linear tolerance		m		1x45°		MOTOR ASSEMBLY				
角度公差 GB/T1804 (ISO 2768-1) Angular tolerance		m								
0.5 +3	>3+ 6	>6+ 30	>30+ 120	>120 +400	>400+ 1000	>1000 +2000	>2000 +4000	未注圆角 Undimensioned radii	R0,5	电机总装
±0.1	±0.1	±0.2	±0.3	±0.5	±0.8	±1.2	±2			
年,月,日 Date		名字 Name				图号 Drawing No.		版本 Rev	A	
设计 Designed						51553N-2-A-3		比例 Scale		
校对 Checked						重量 Kg		数量 Qty	页码 Sheet	
审核 Approved						116.149		1/1	1/1	



宁波菲仕运动控制技术有限公司
NINGBO PHASE MOTION CONTROL CO.,LTD.